

Scientific Genealogies of Physical and Mechanistic Organic Chemists

John Andraos

Department of Chemistry, York University, Toronto, ON M3J 1P3

jandraos@yorku.ca

FAX: 416-736-5936

Supplementary Material

Scientific Genealogy Trees

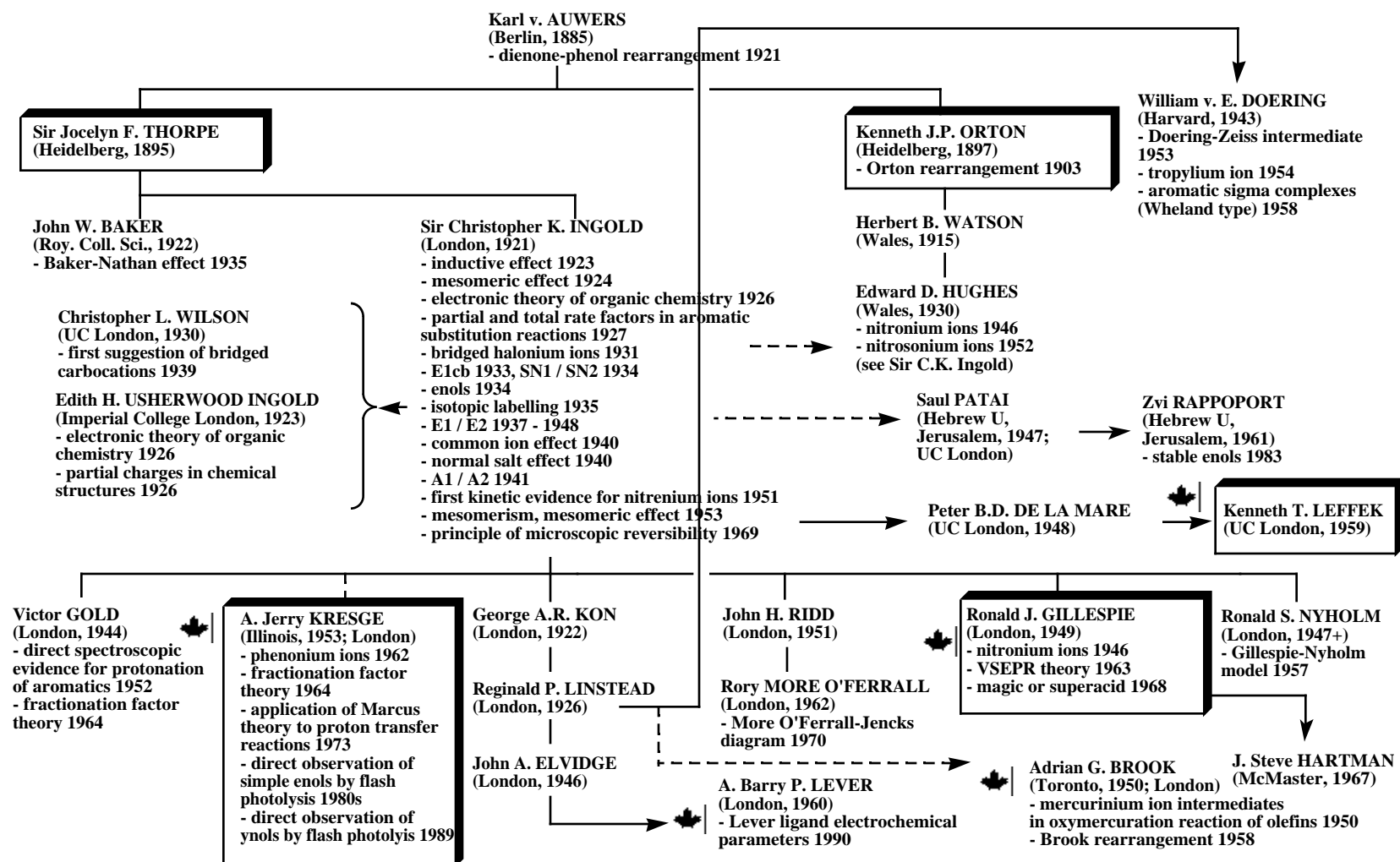


Fig. S1. Scientific genealogy tree for Karl v. Auwers.

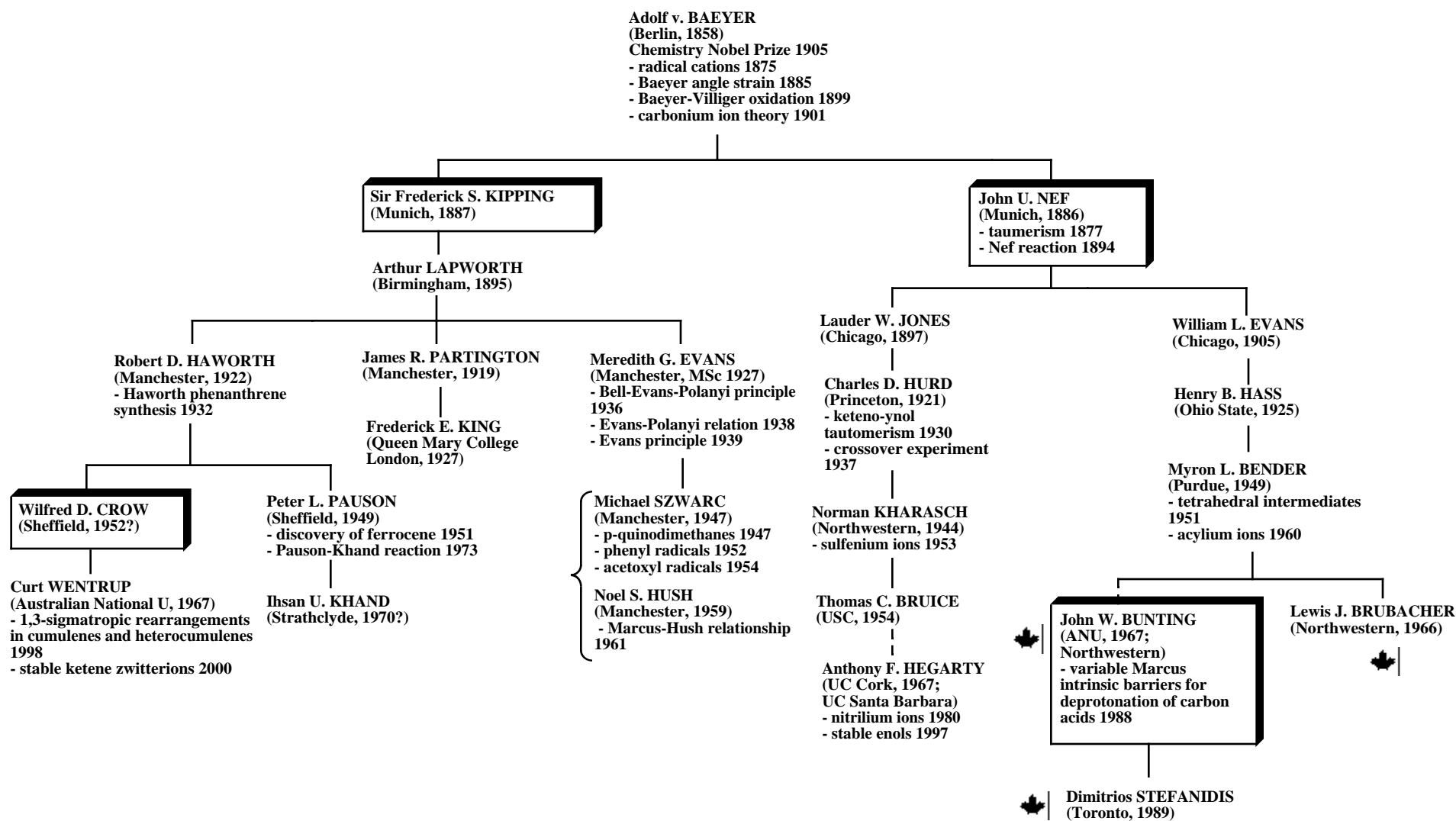


Fig. S2. Scientific genealogy tree #1 for Adolf v. Baeyer.

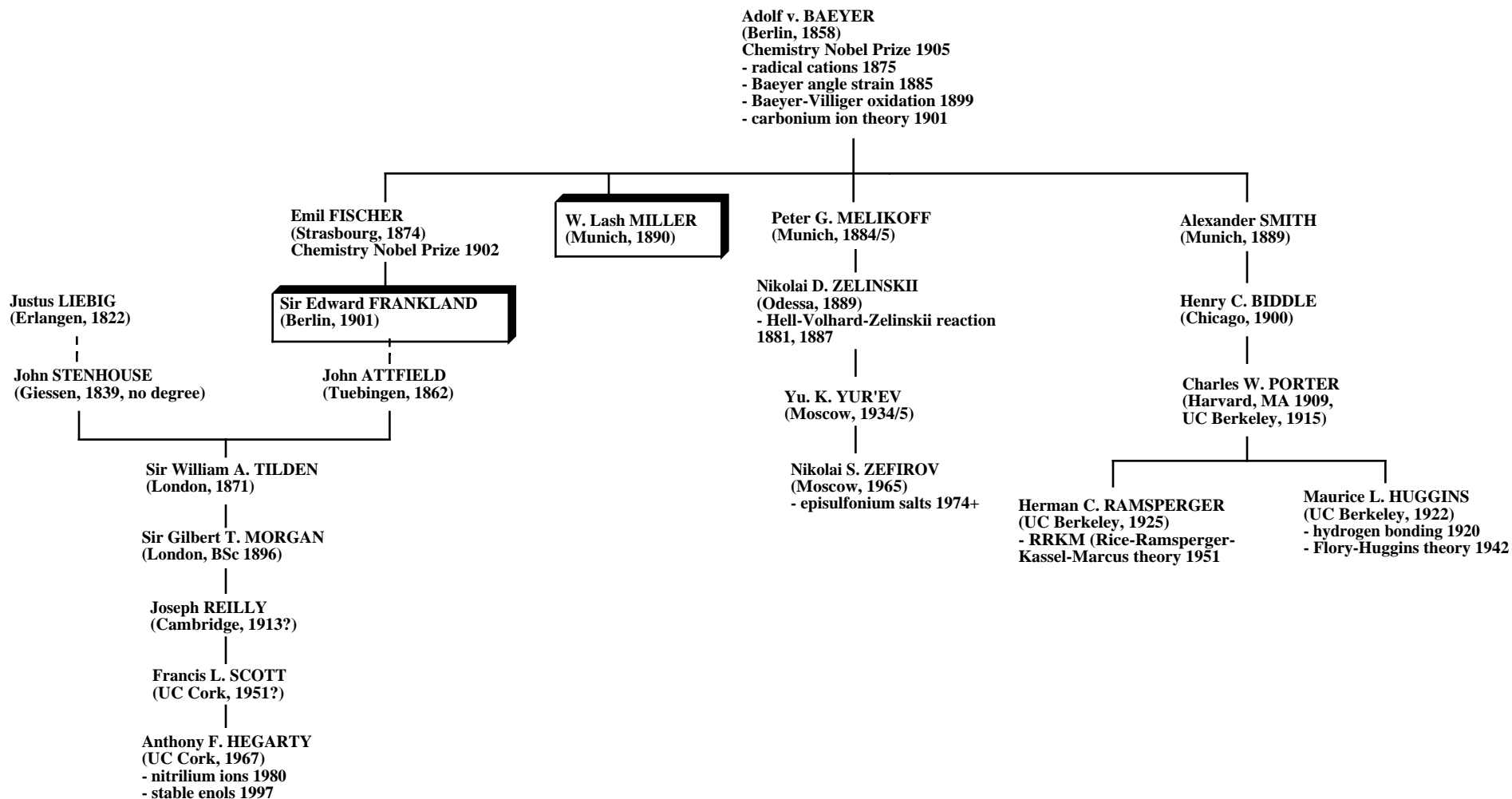


Fig. S3. Scientific genealogy tree #2 for Adolf v. Baeyer.

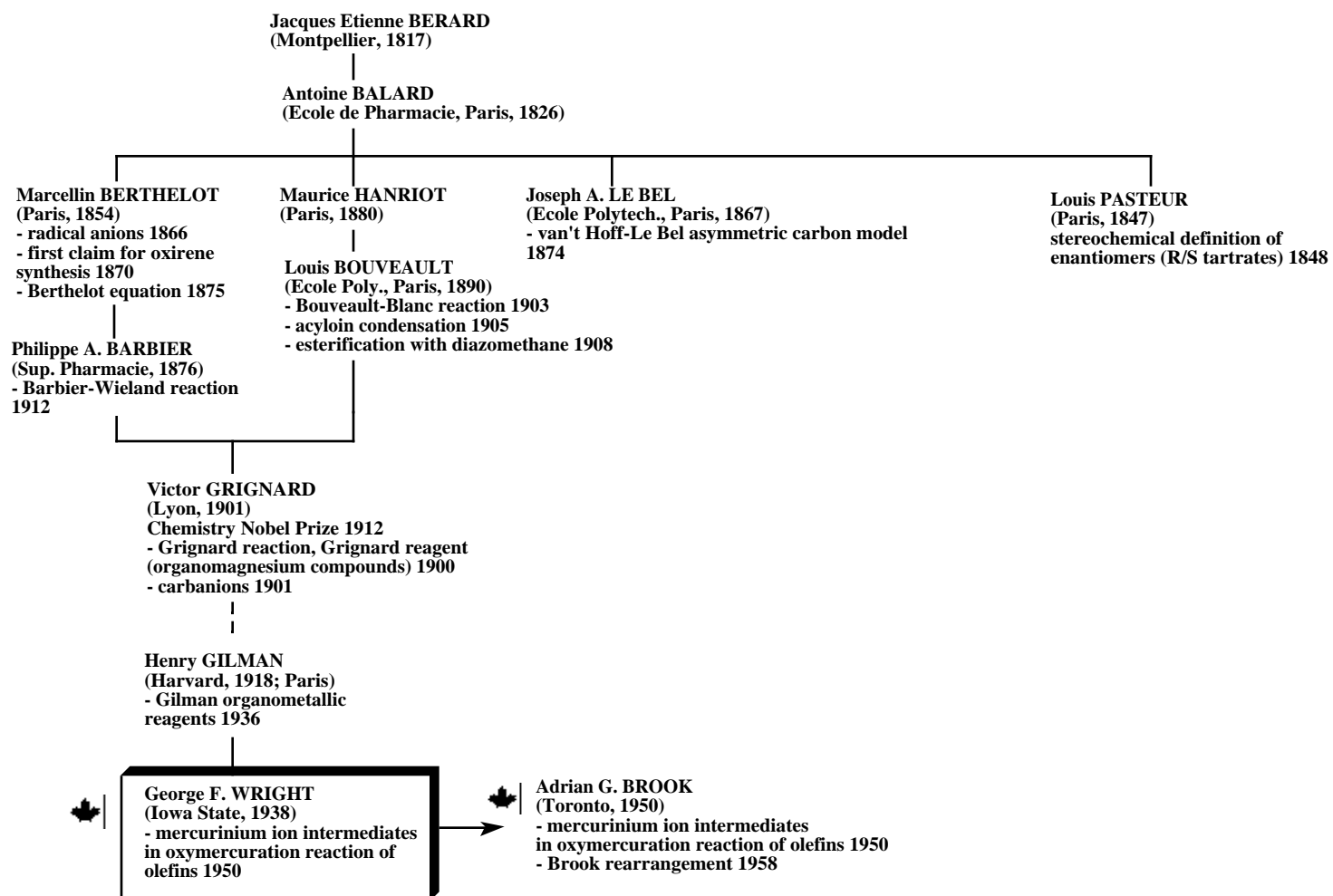


Fig. S4. Scientific genealogy tree for Jacques E. Berard.

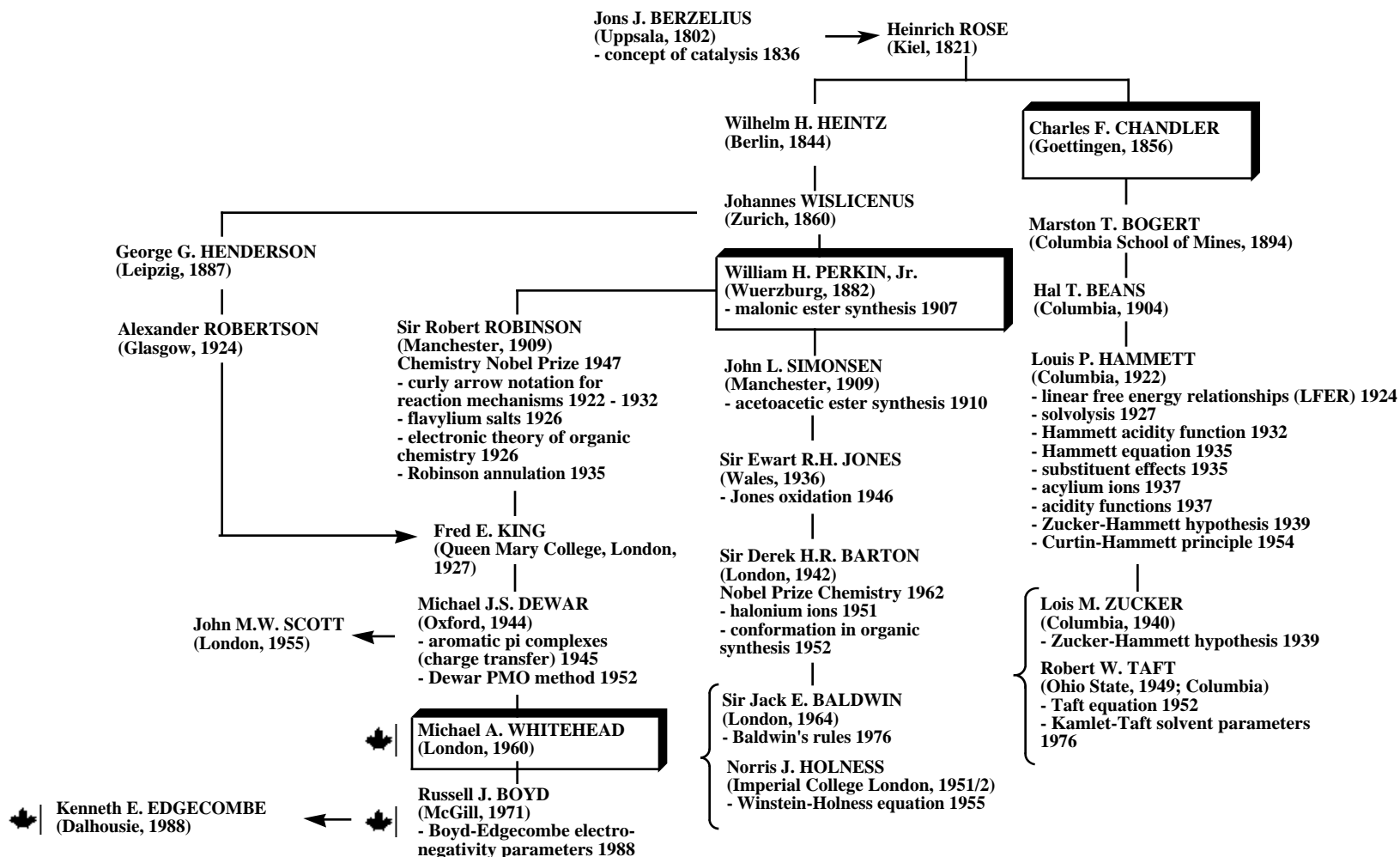


Fig. S5. Scientific genealogy tree #1 for Jons Jakob Berzelius.

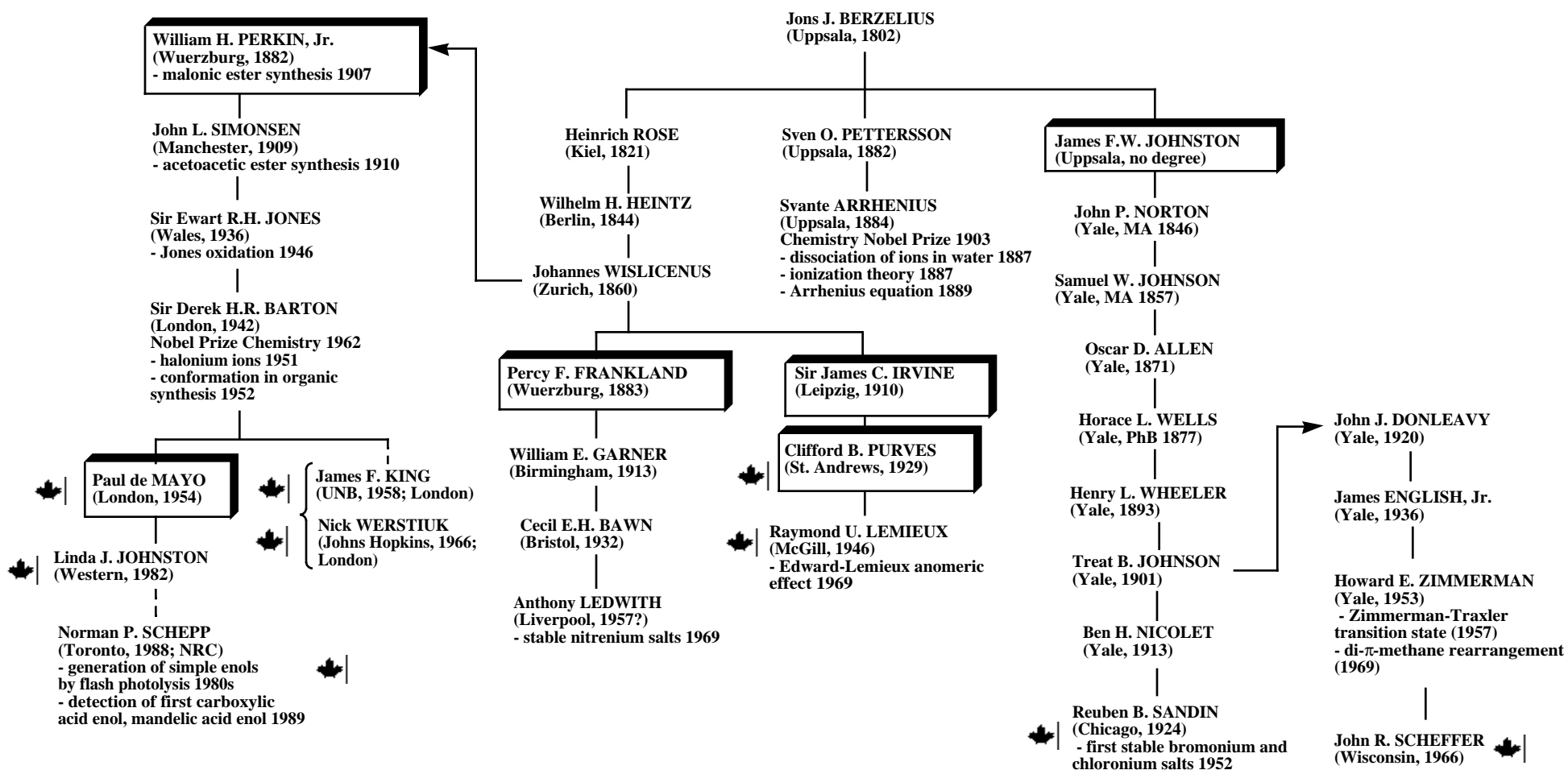


Fig. S6. Scientific genealogy tree #2 for Jons Jakob Berzelius.

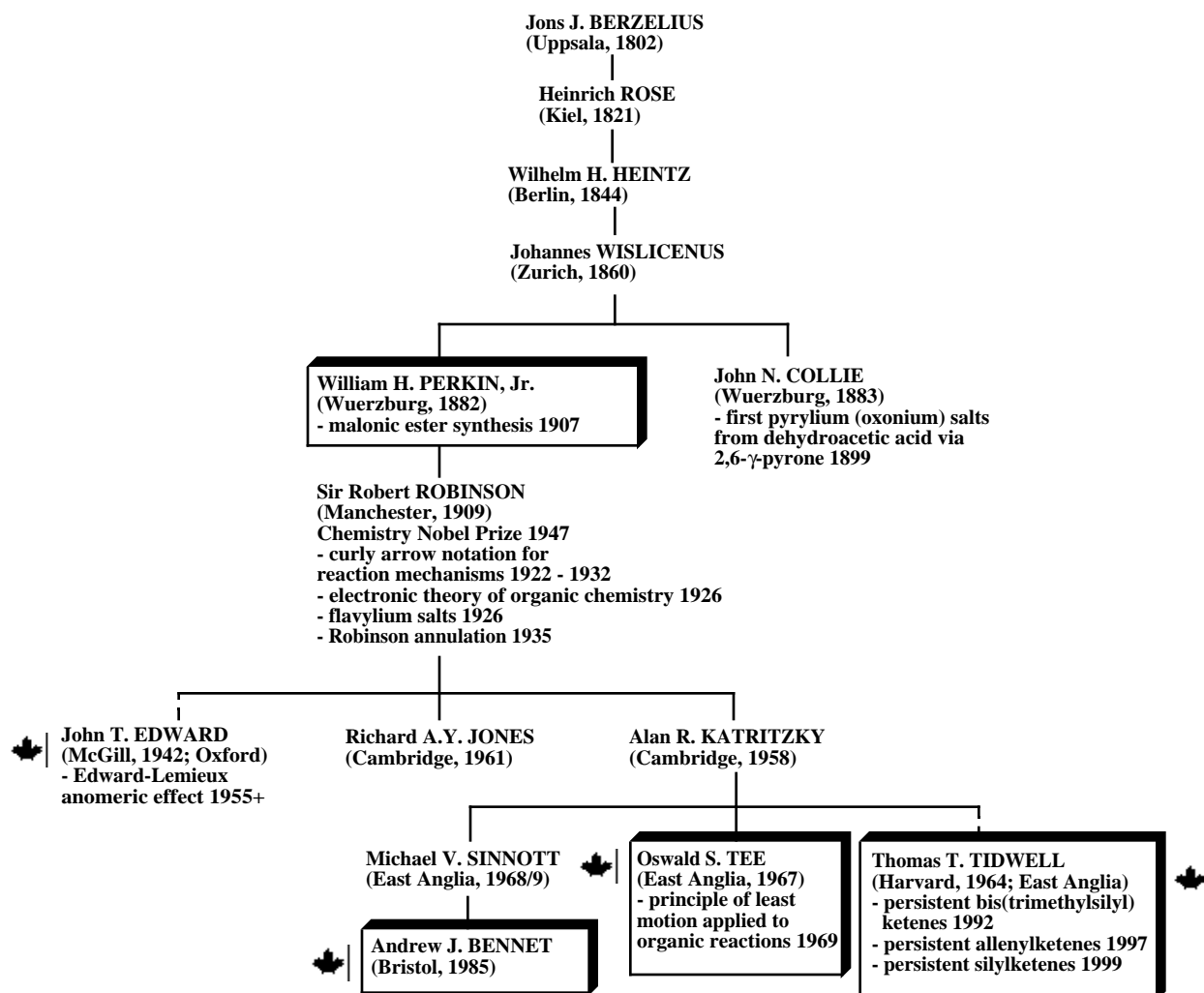


Fig. S7. Scientific genealogy tree #3 for Jons Jakob Berzelius.

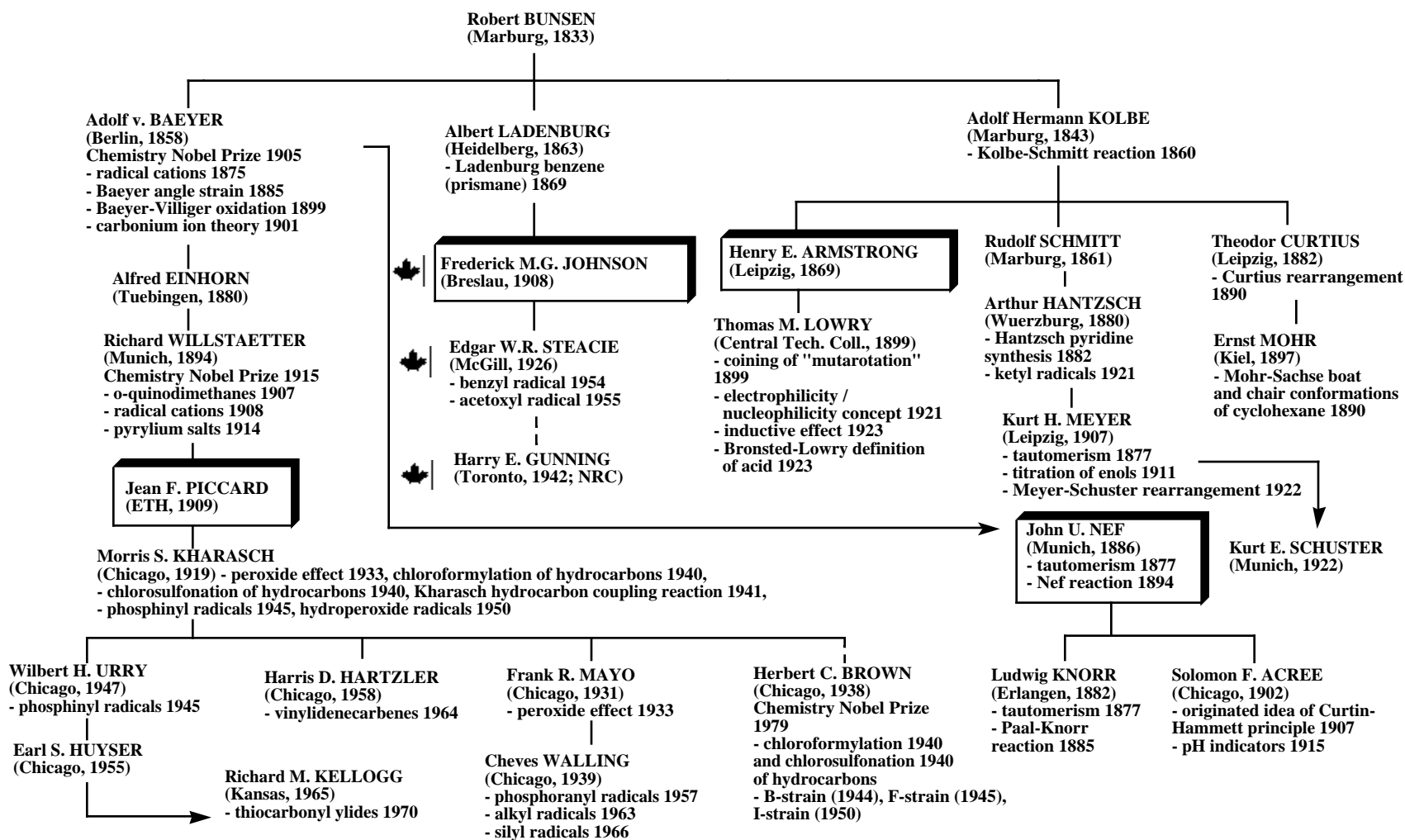


Fig. S8. Scientific genealogy tree #1 for Robert Bunsen.

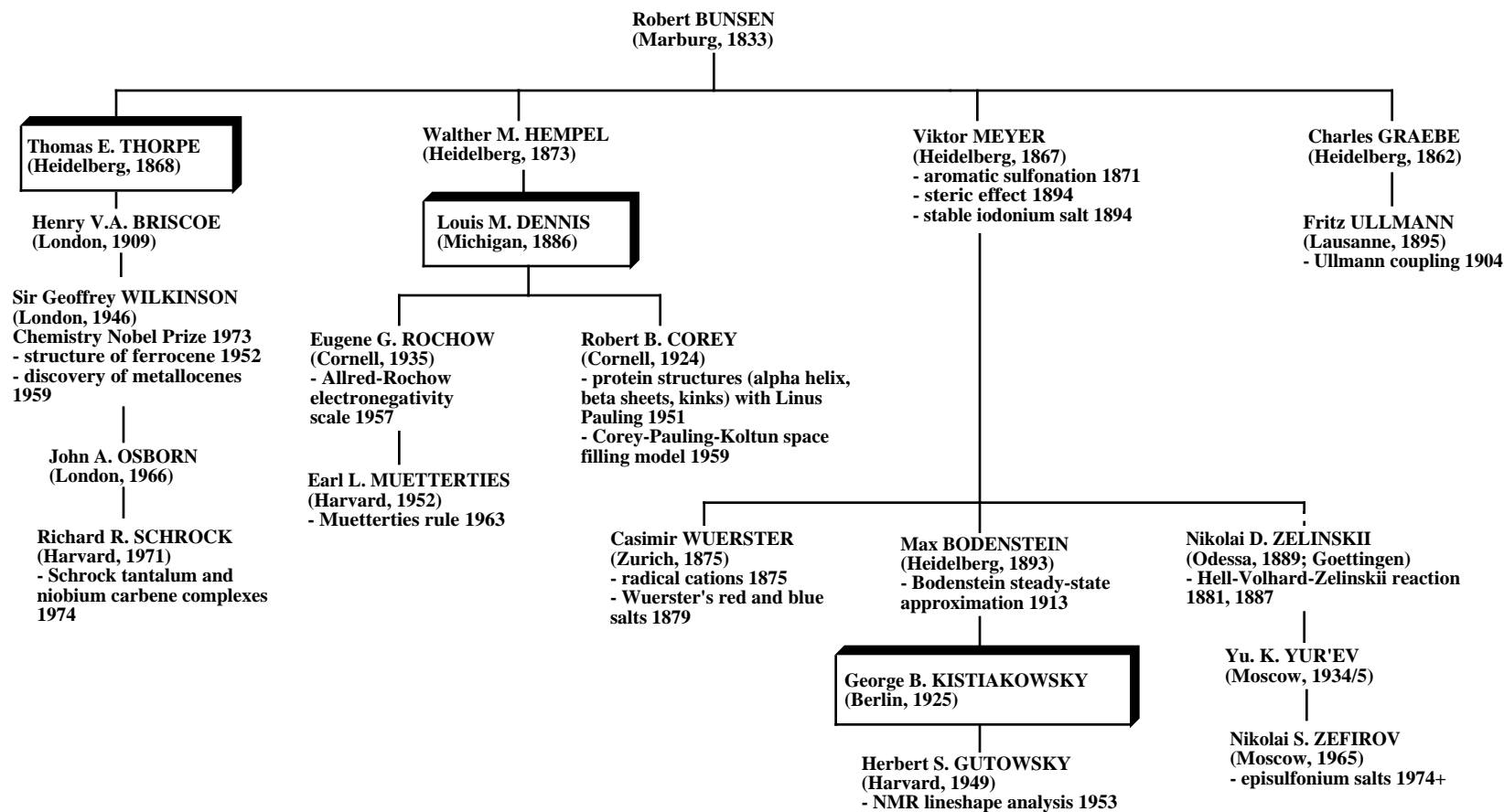


Fig. S9. Scientific genealogy tree #2 for Robert Bunsen.

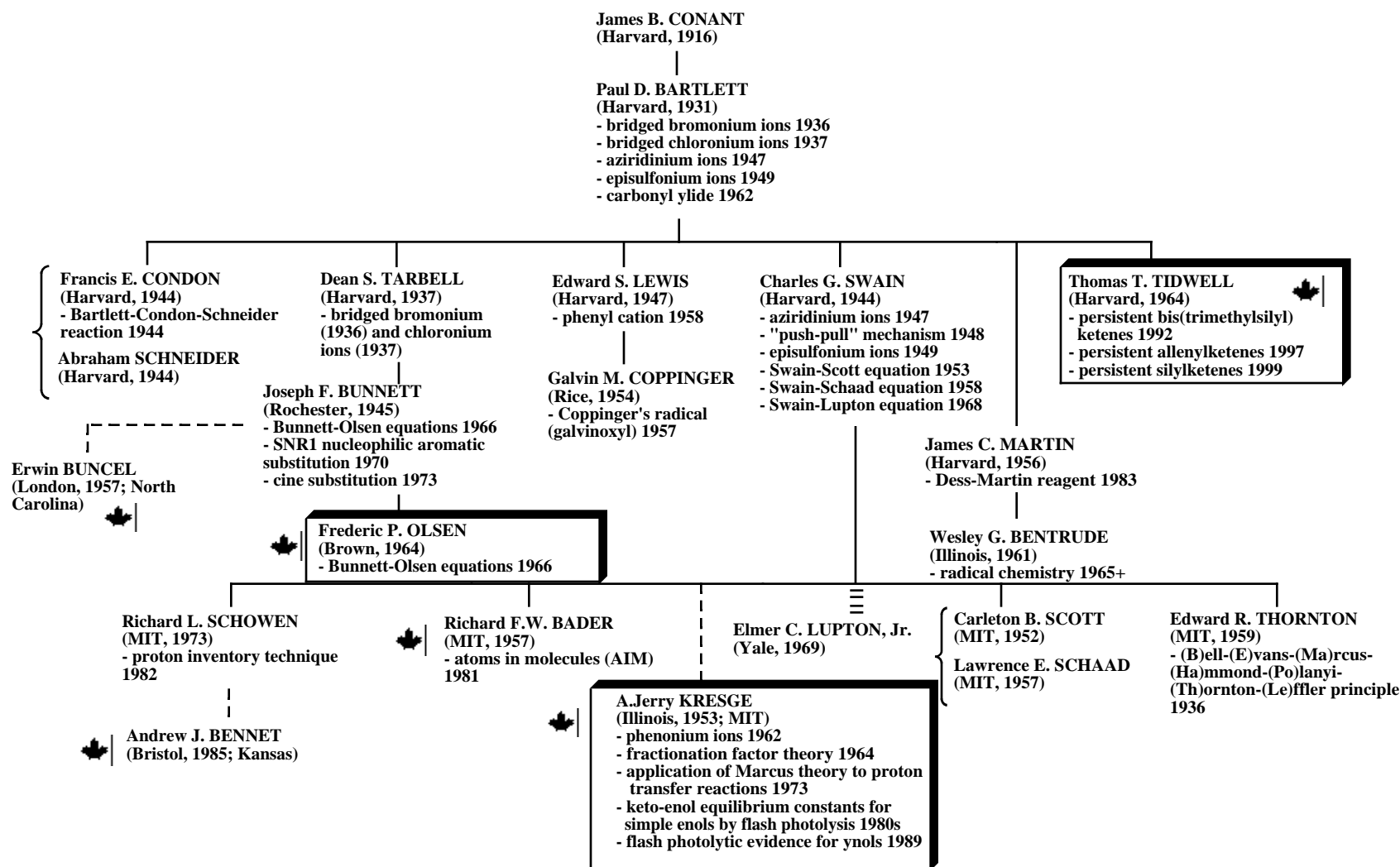


Fig. S10. Scientific genealogy tree #1 for James B. Conant.

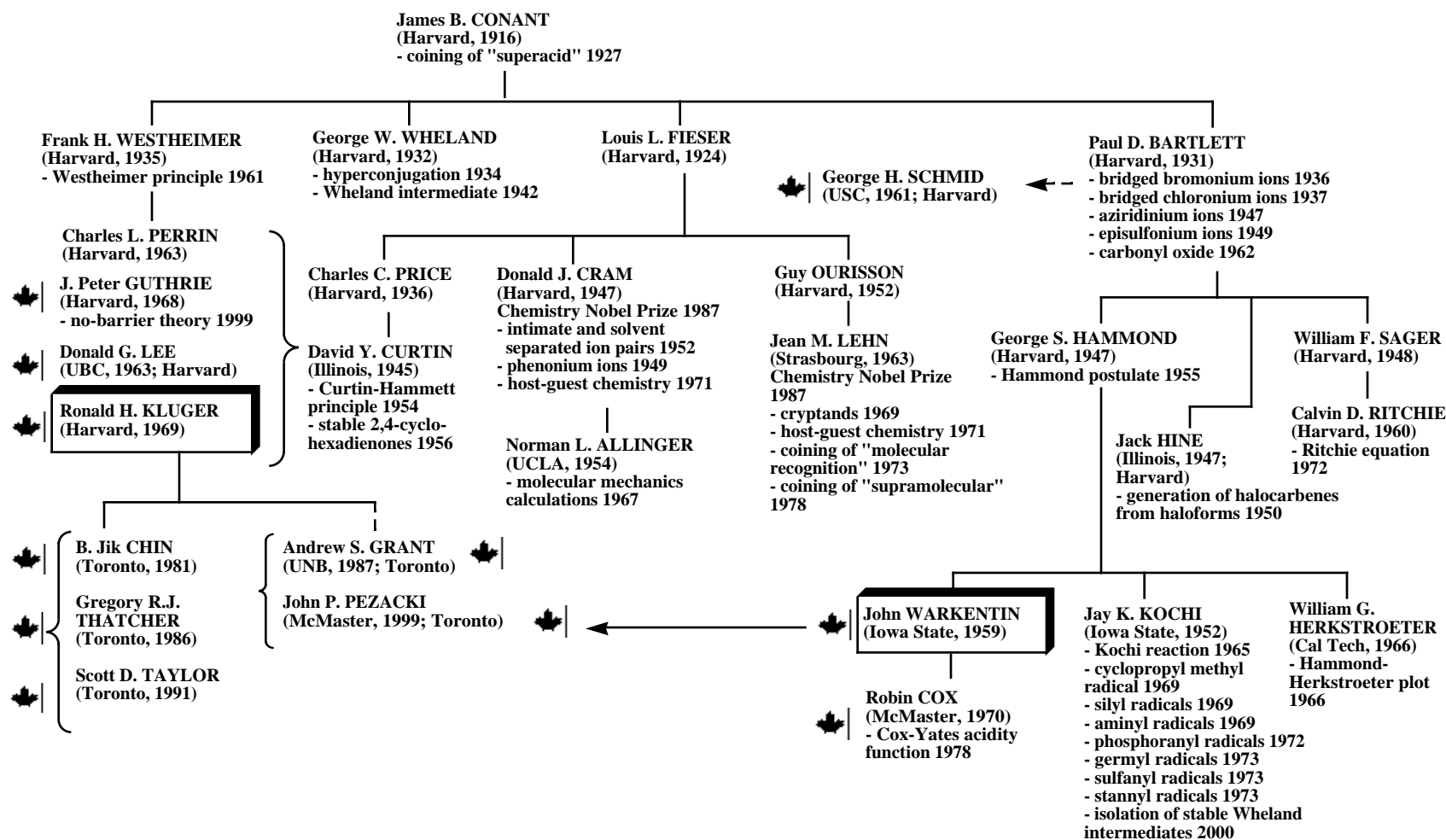


Fig. S11. Scientific genealogy tree #2 for James B. Conant.

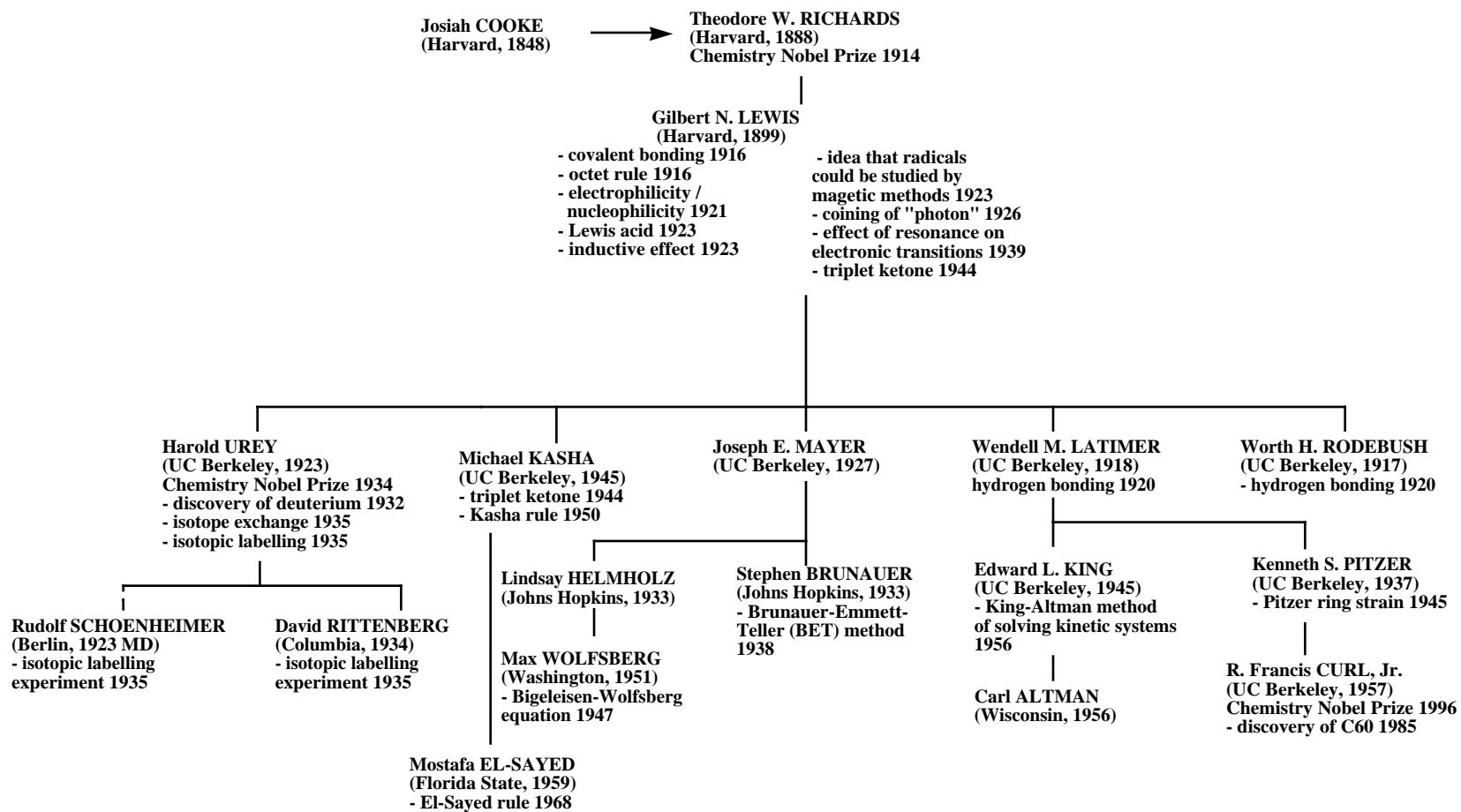


Fig. S12. Scientific genealogy tree #1 for Josiah Cooke.

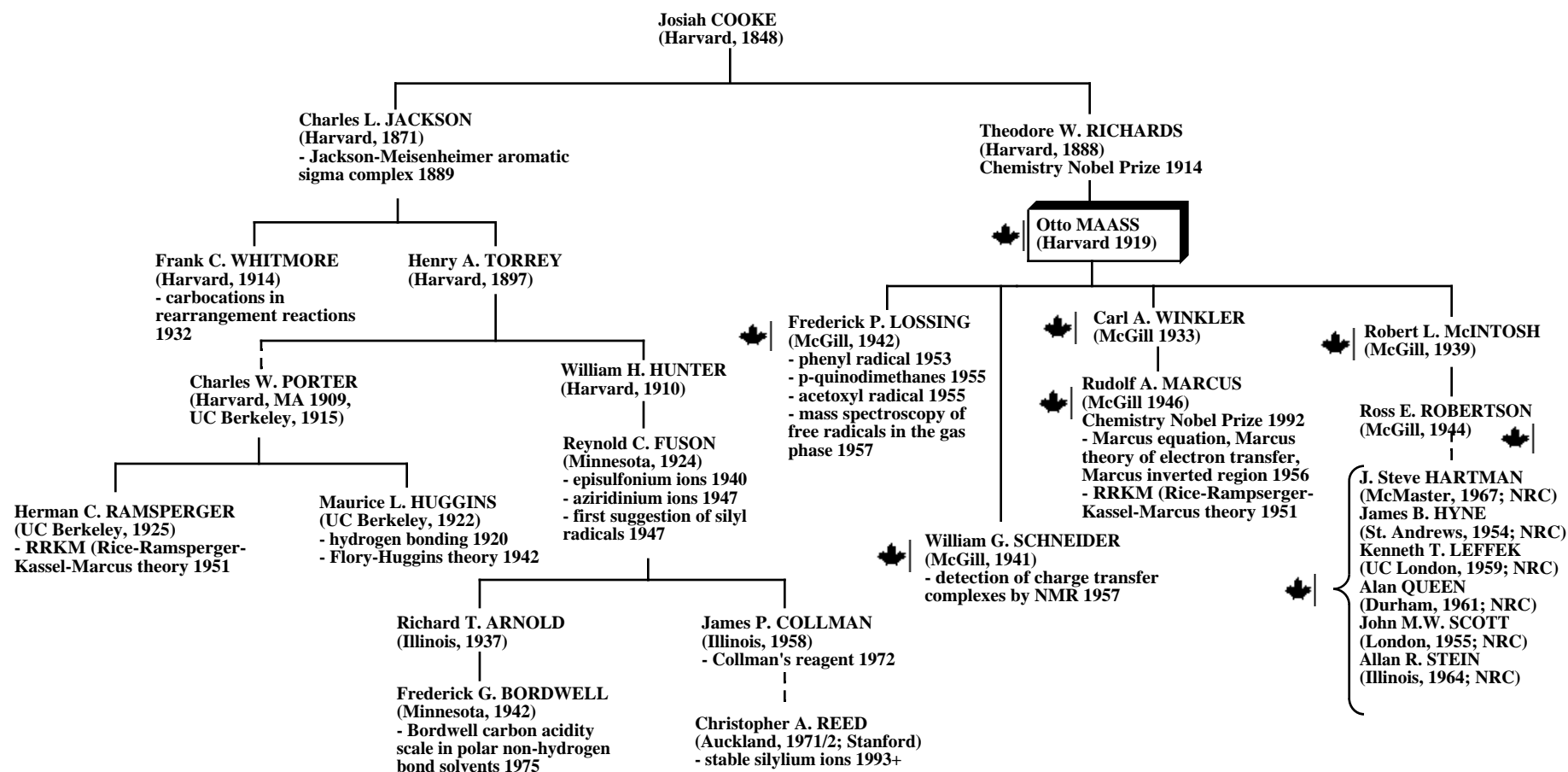


Fig. S13. Scientific genealogy tree #2 for Josiah Cooke.

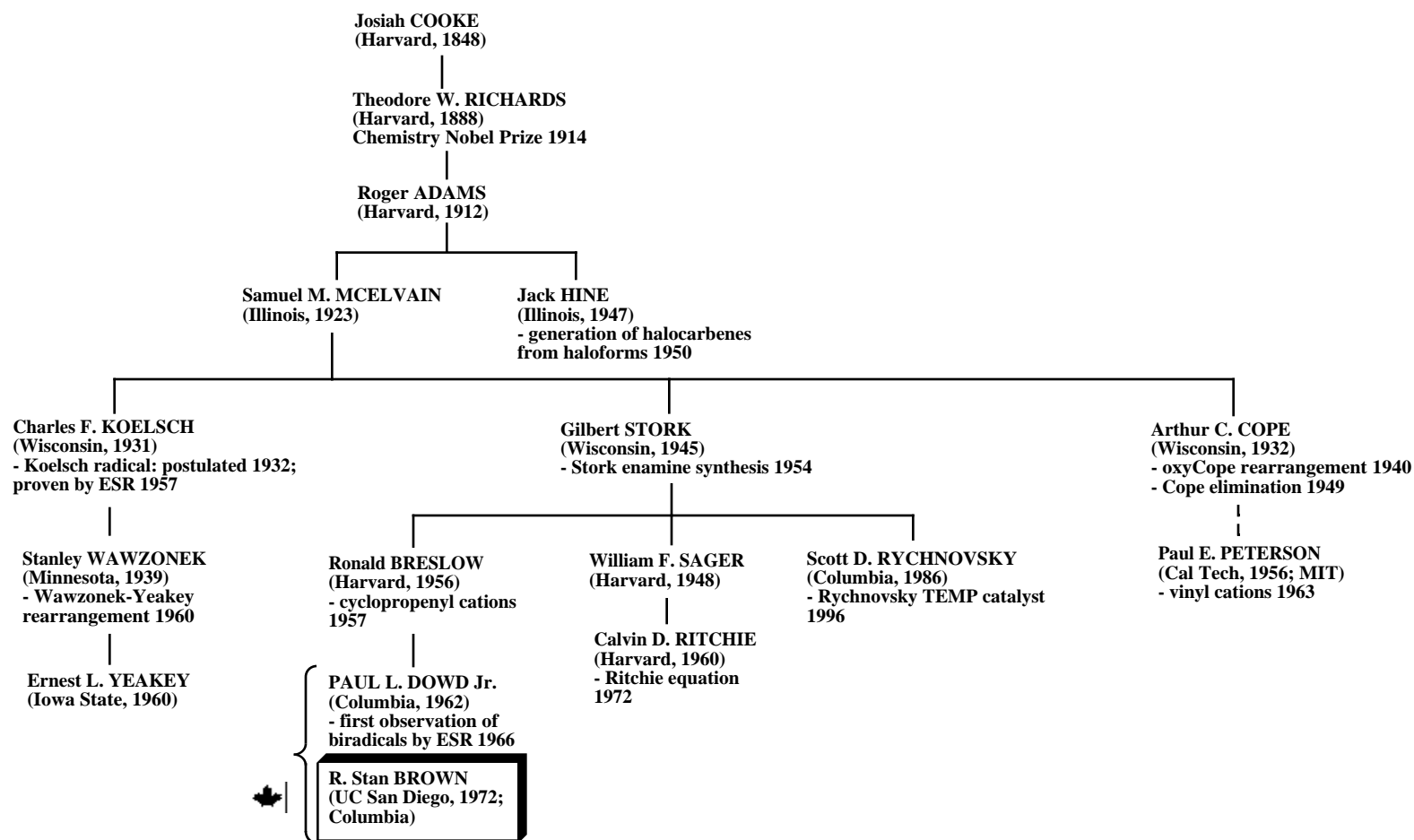


Fig. S14. Scientific genealogy tree #3 for Josiah Cooke.

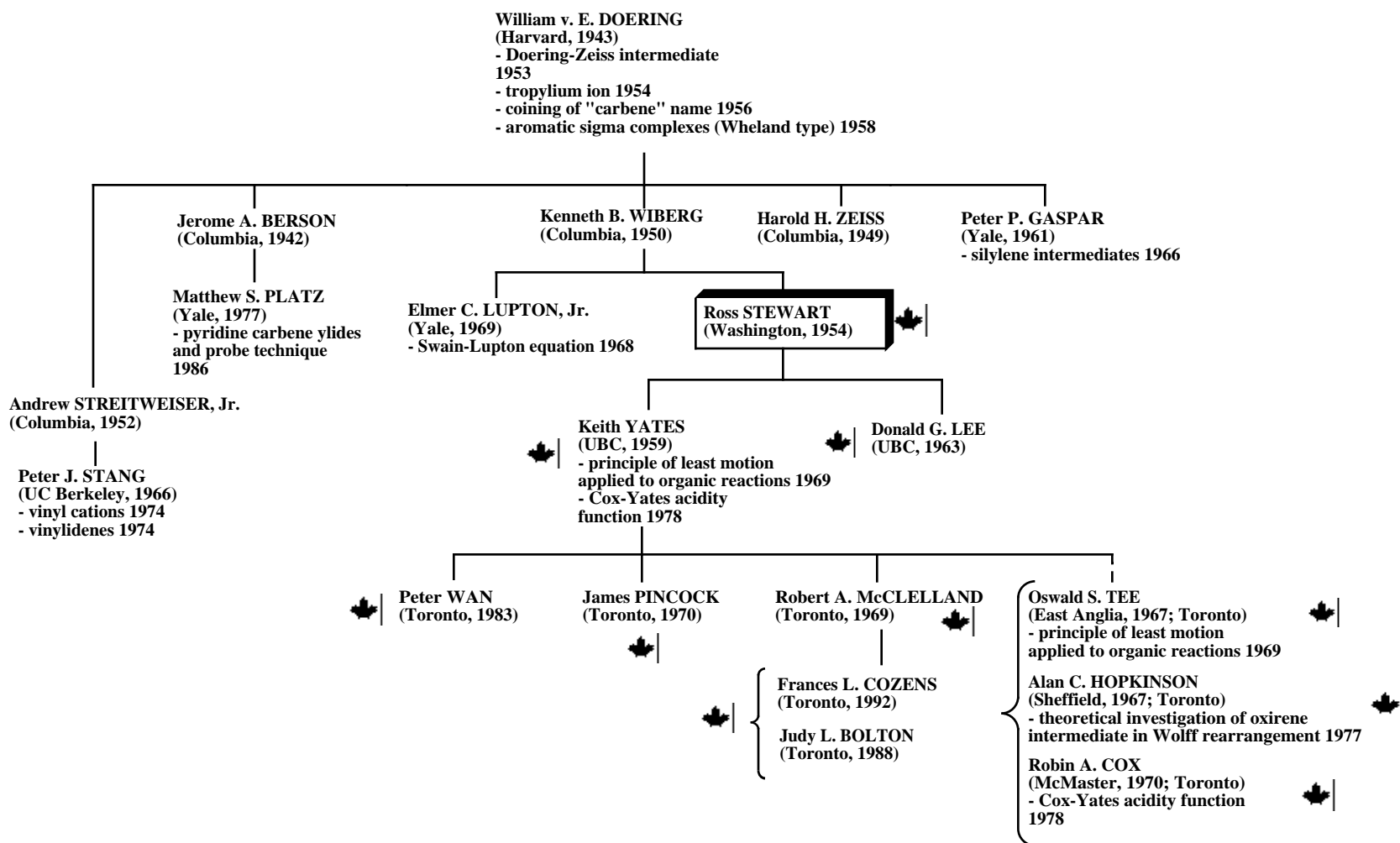


Fig. S15. Scientific genealogy tree for William v. E. Doering.

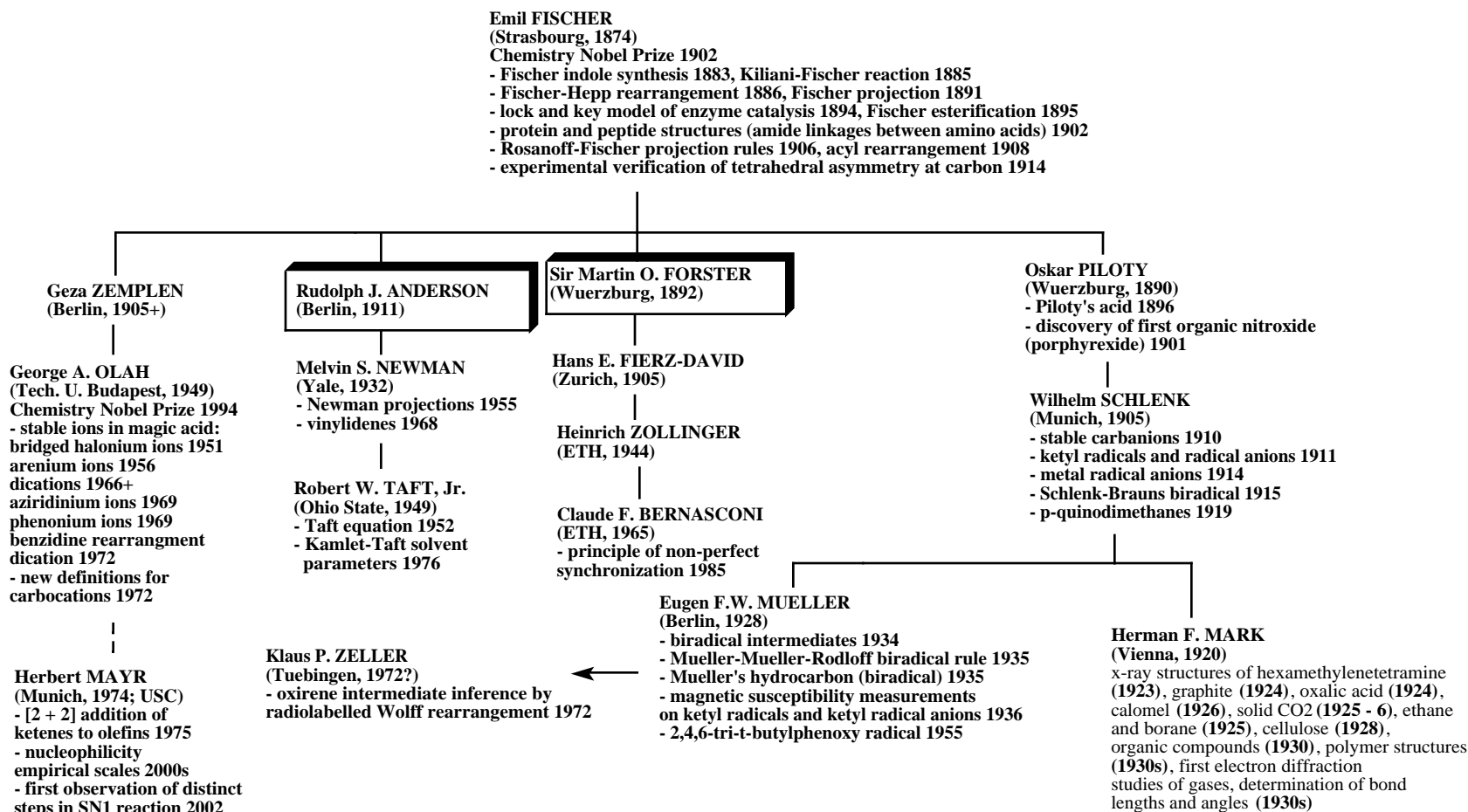


Fig. S16. Scientific genealogy tree #1 for Emil Fischer.

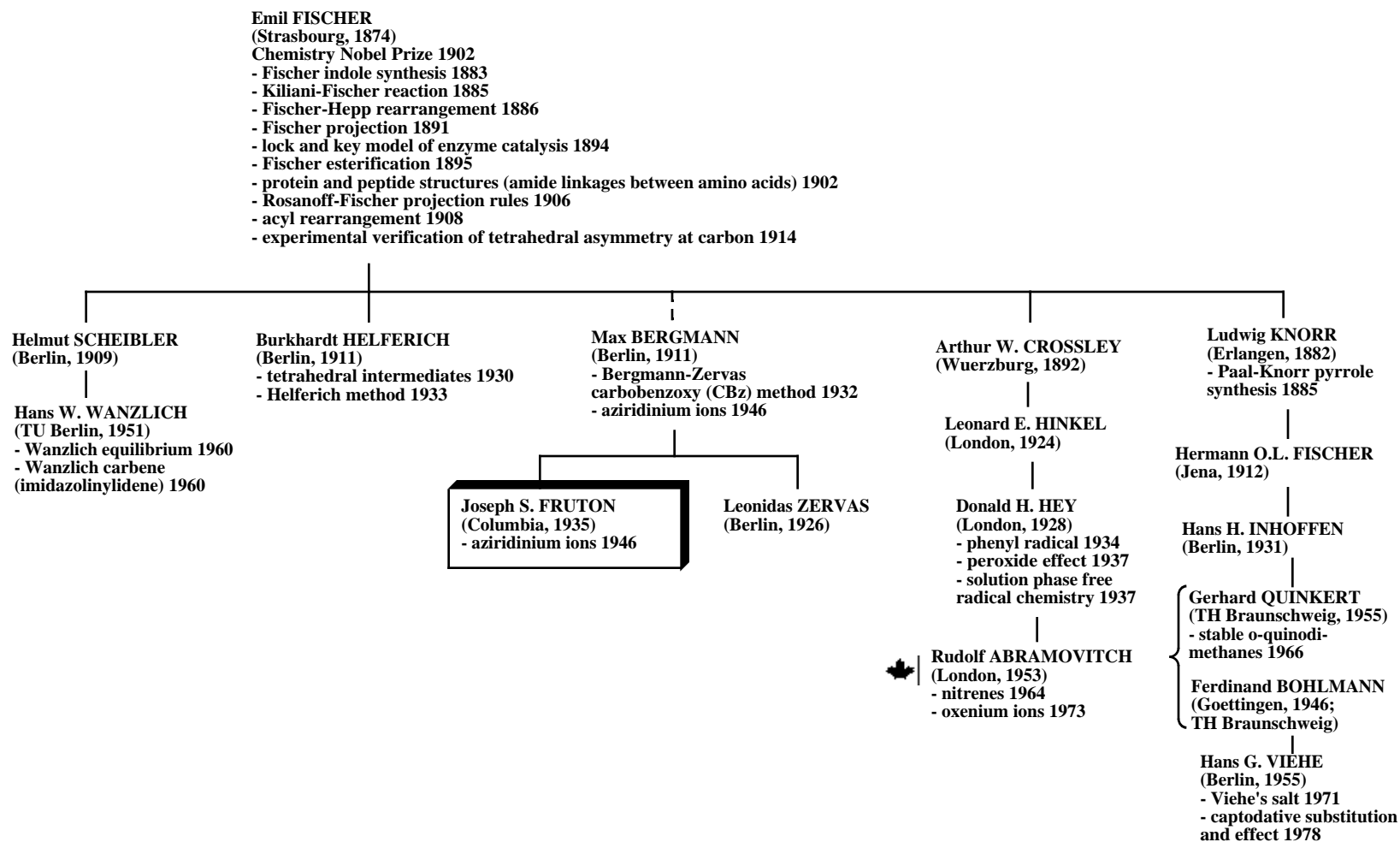


Fig. S17. Scientific genealogy tree #2 for Emil Fischer.

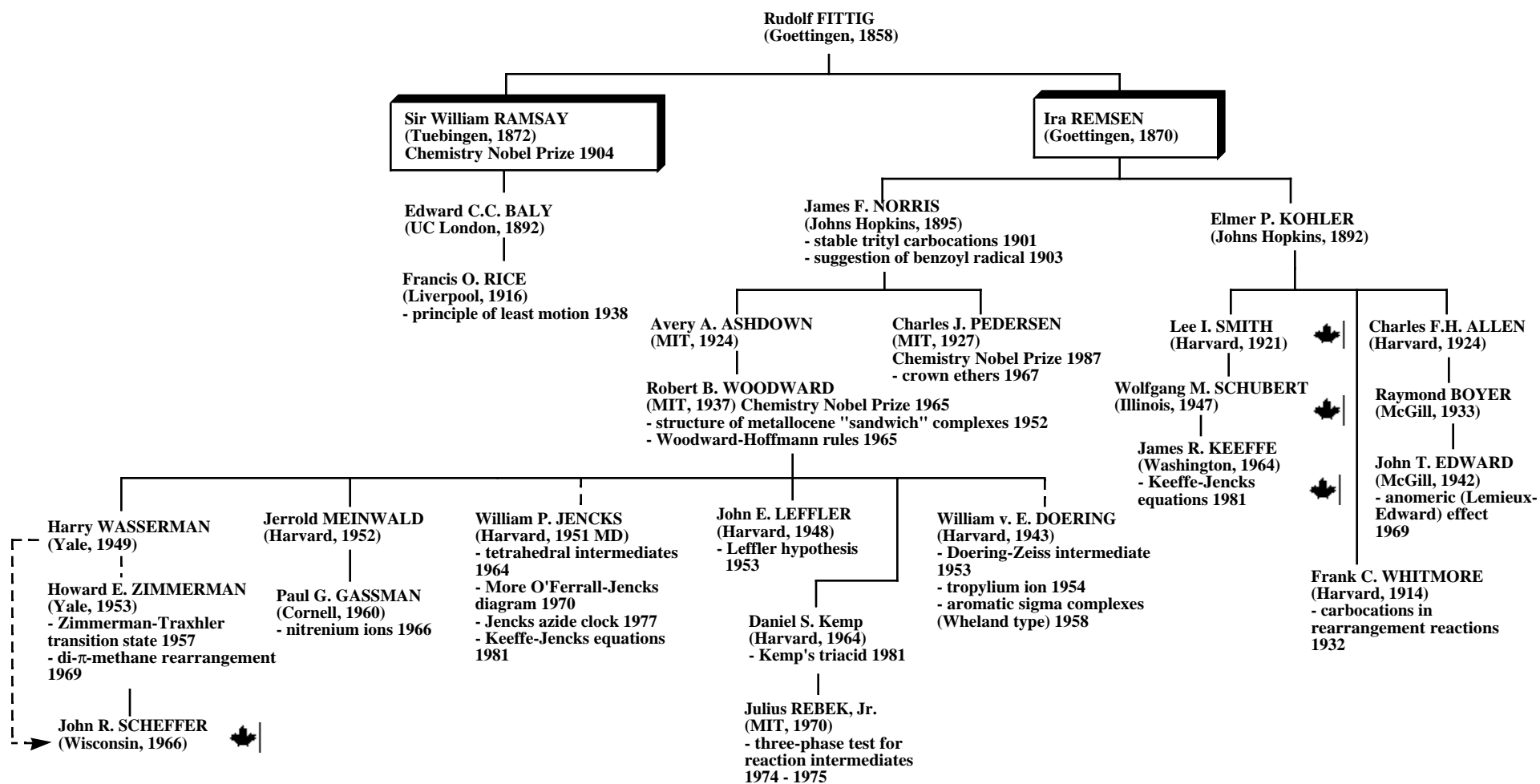


Fig. S18. Scientific genealogy tree for Rudolf Fittig.

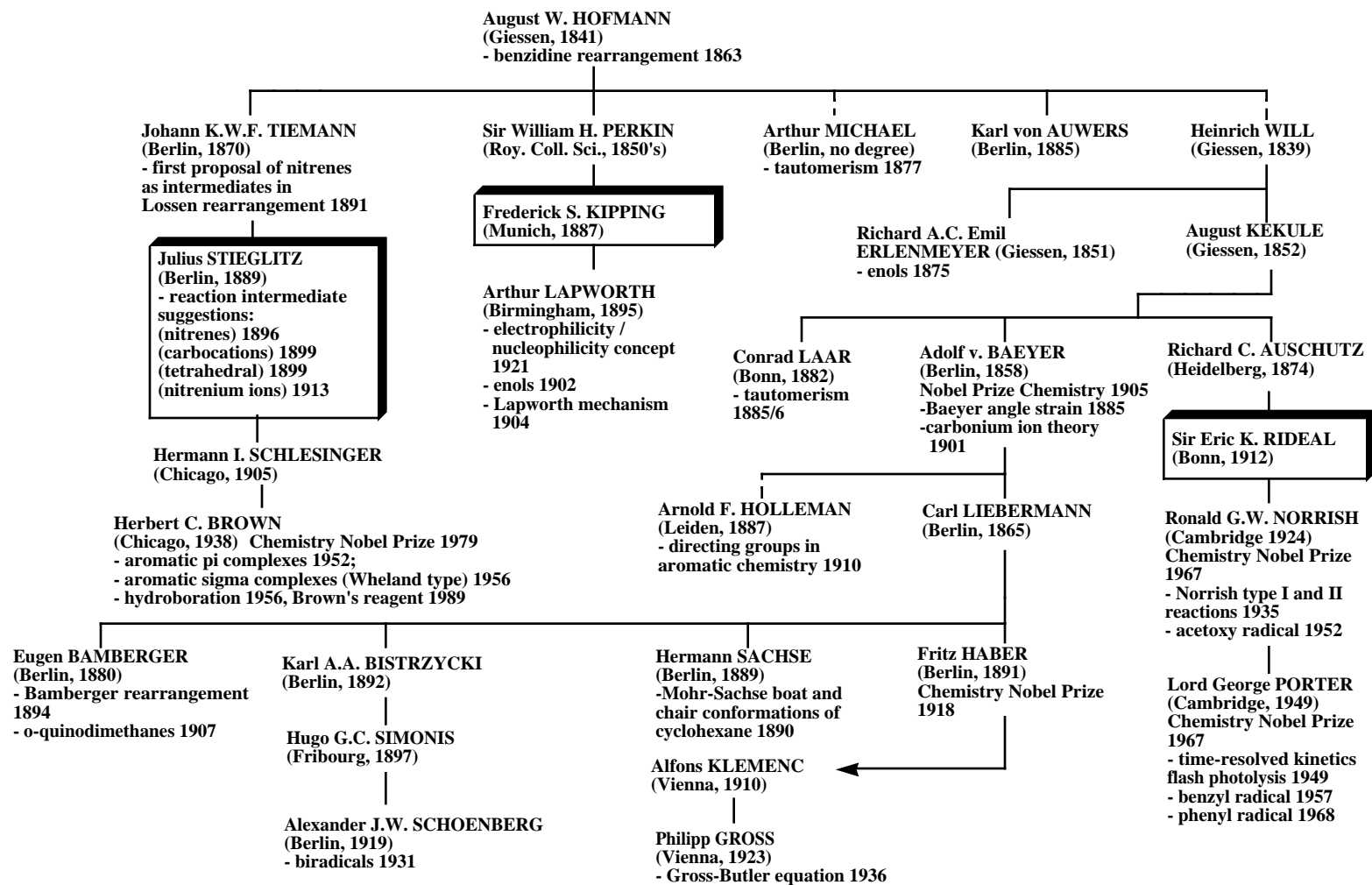


Fig. S19. Scientific genealogy tree #1 for August W. Hofmann.

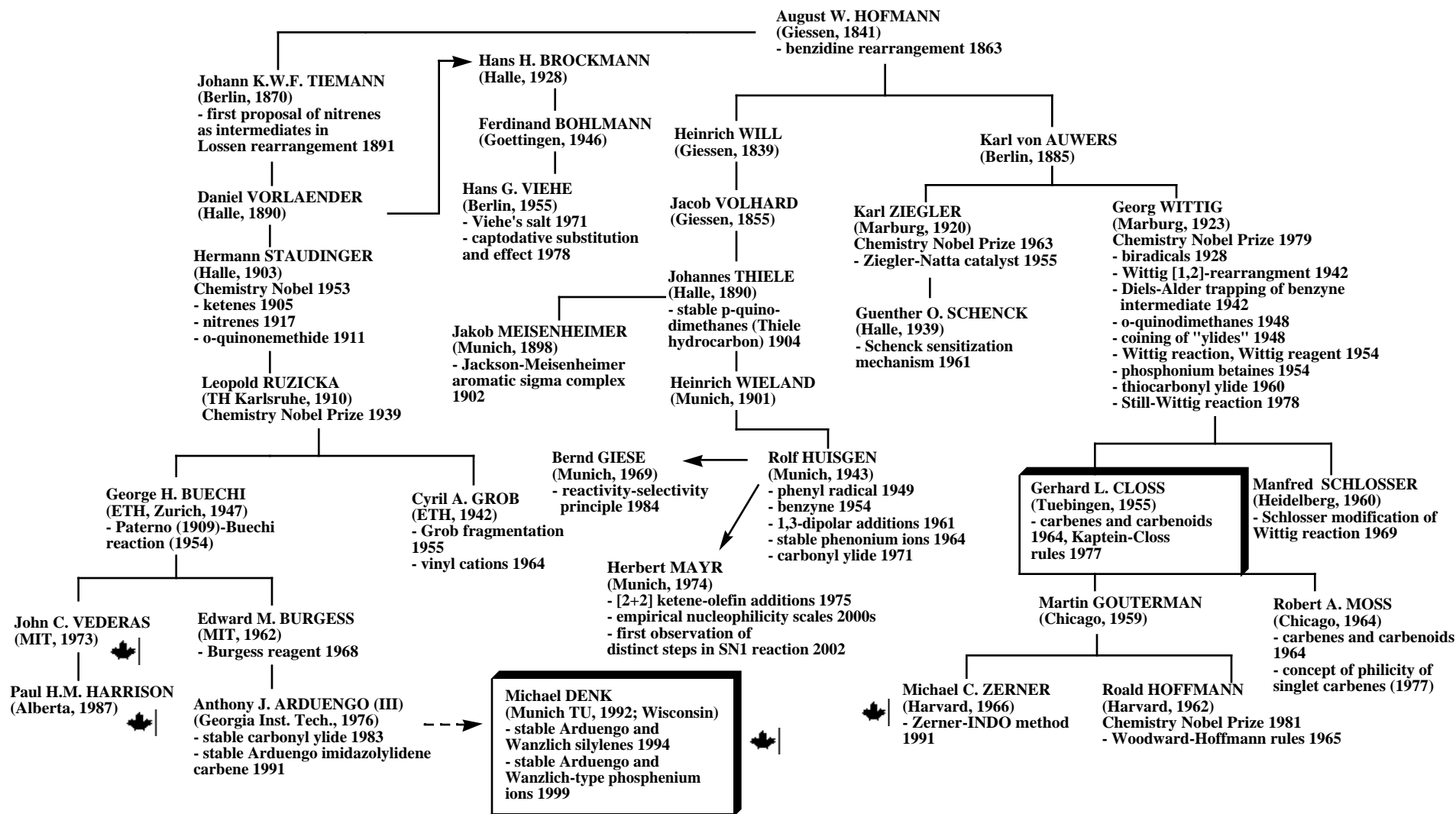


Fig. S20. Scientific genealogy tree #2 for August W. Hofmann.

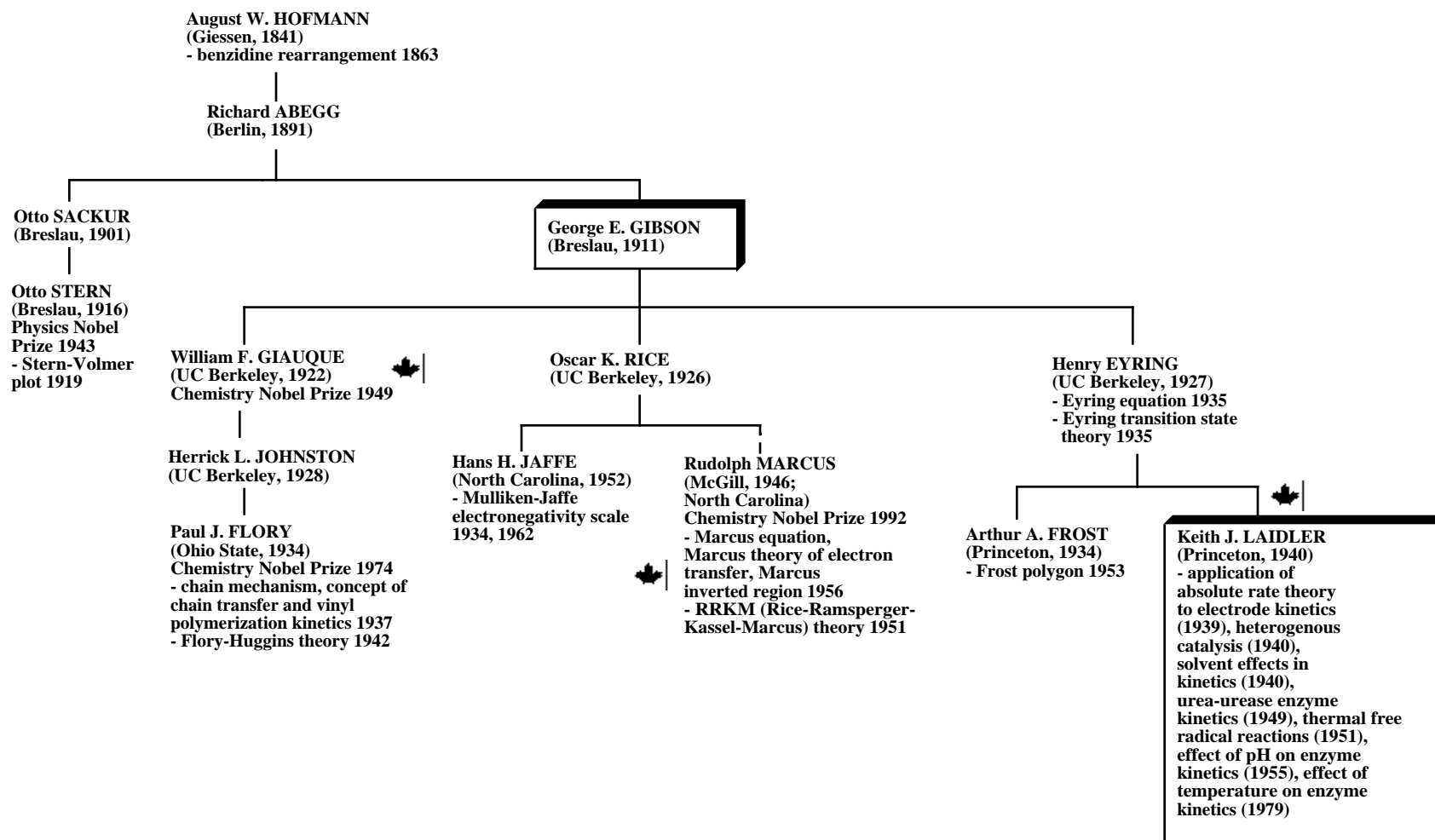


Fig. S21. Scientific genealogy tree #3 for August W. Hofmann.

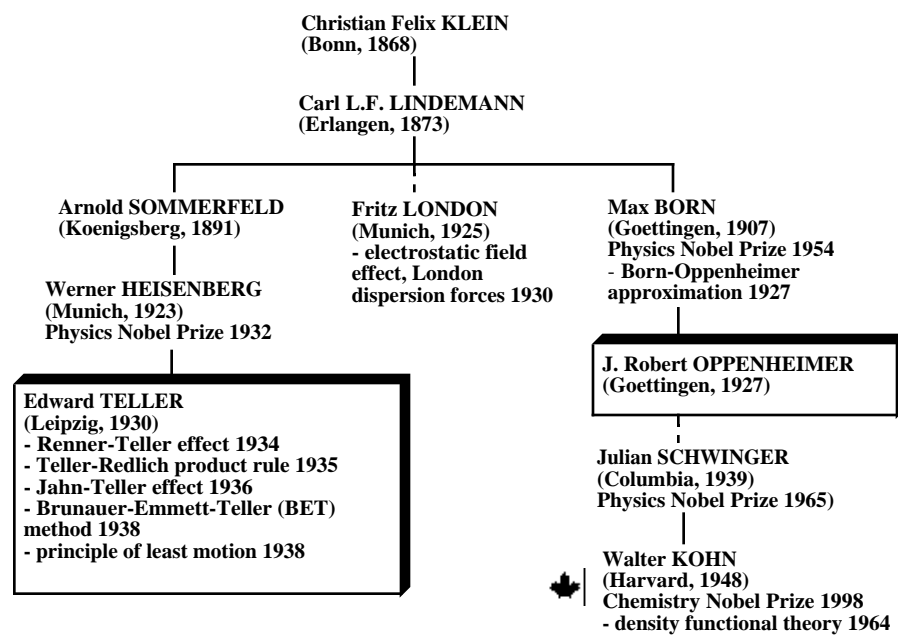


Fig. S22. Scientific genealogy tree for Christian Felix Klein.

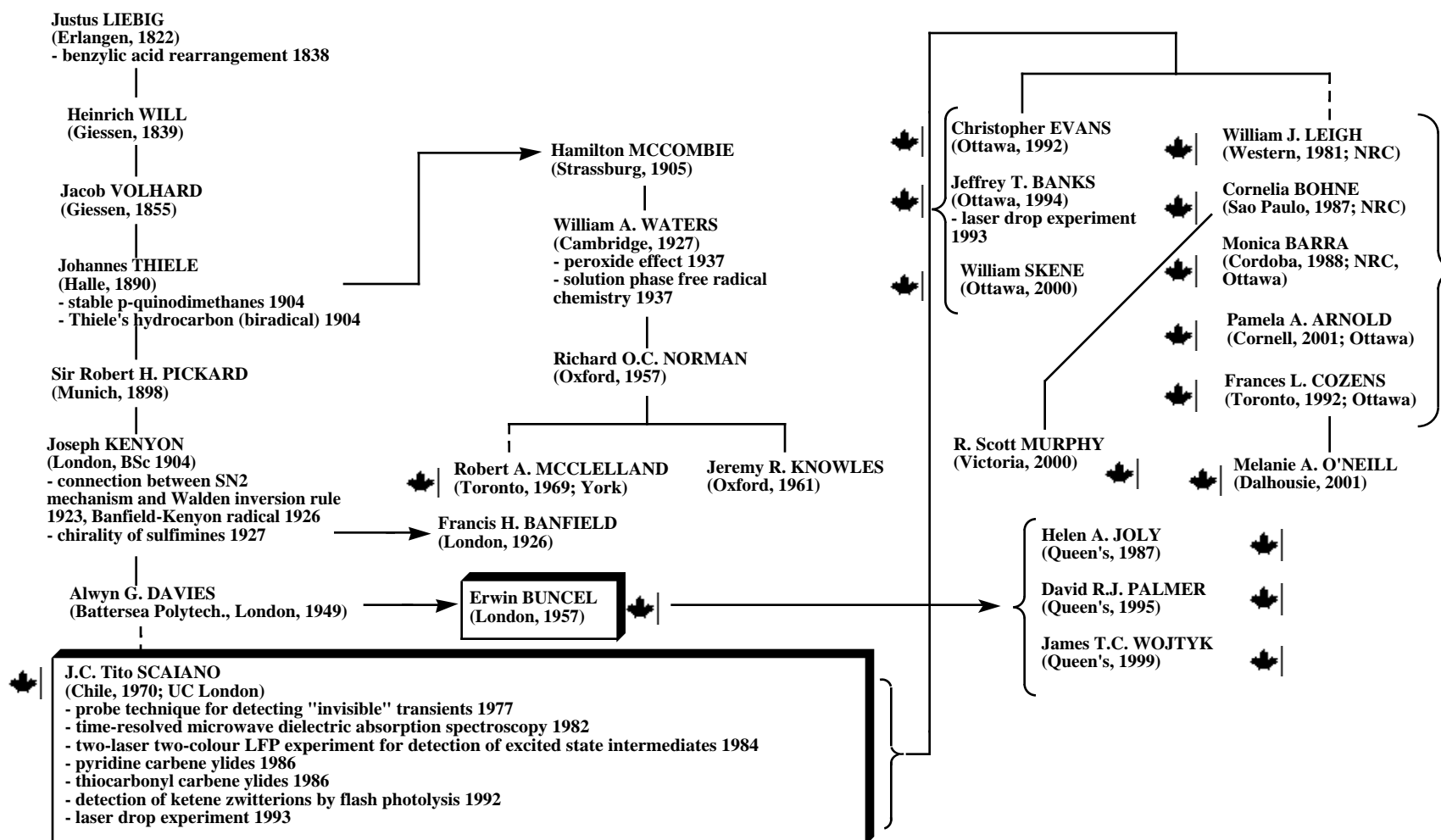


Fig. S23. Scientific genealogy tree #1 for Justus Liebig.

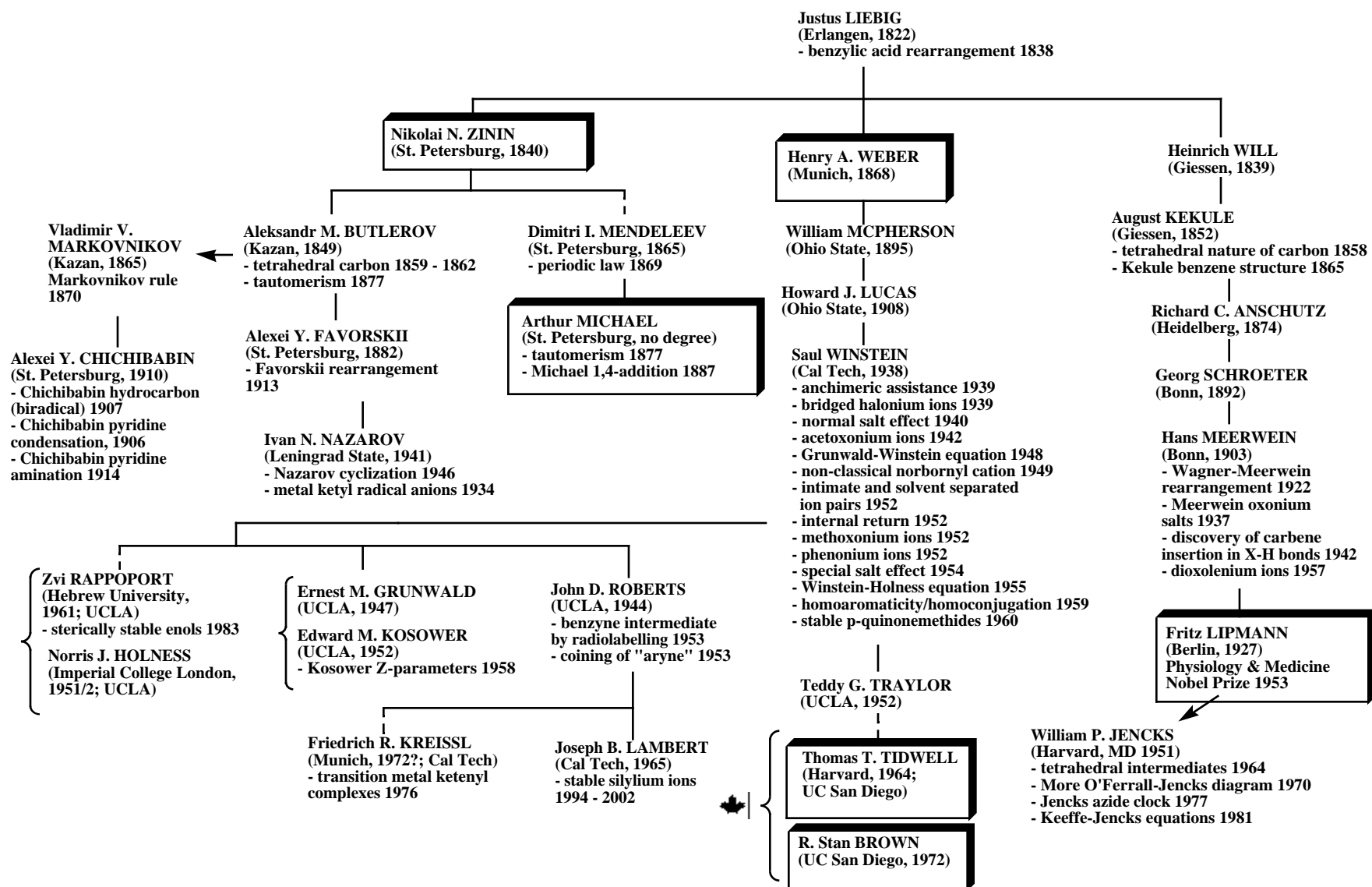


Fig. S24. Scientific genealogy tree #2 for Justus Liebig.

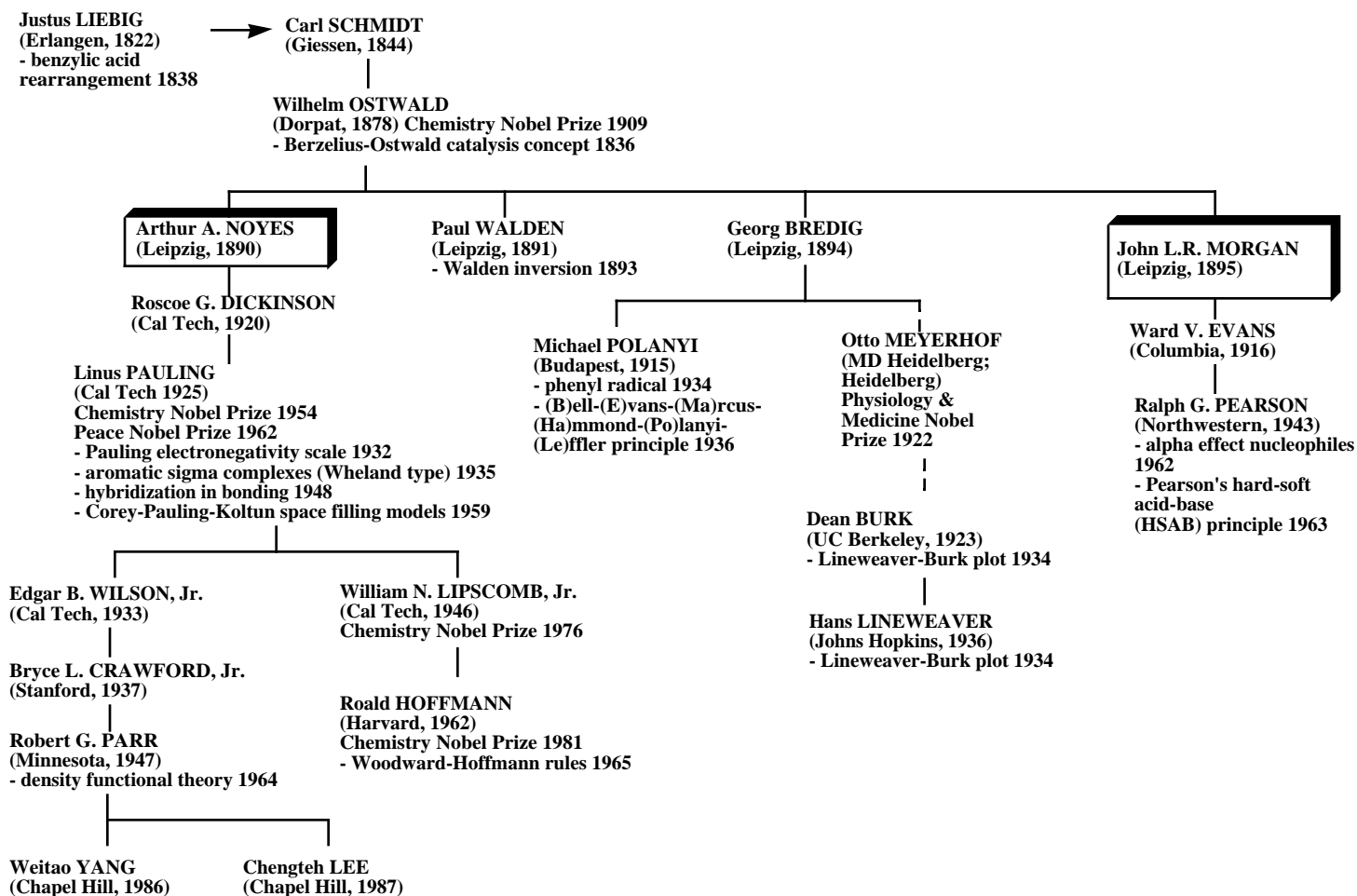


Fig. S25. Scientific genealogy tree #3 for Justus Liebig.

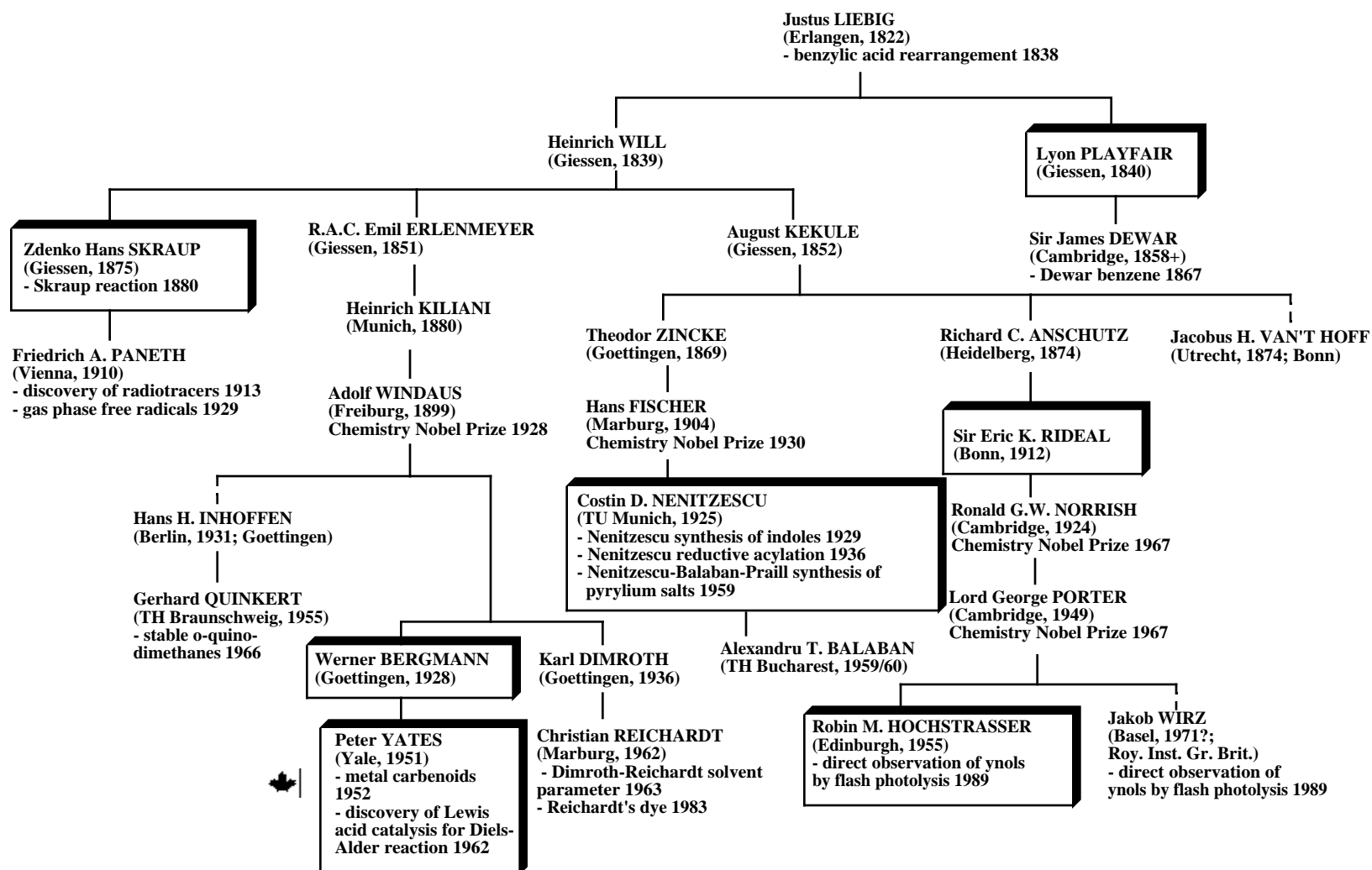


Fig. S26. Scientific genealogy tree #4 for Justus Liebig.

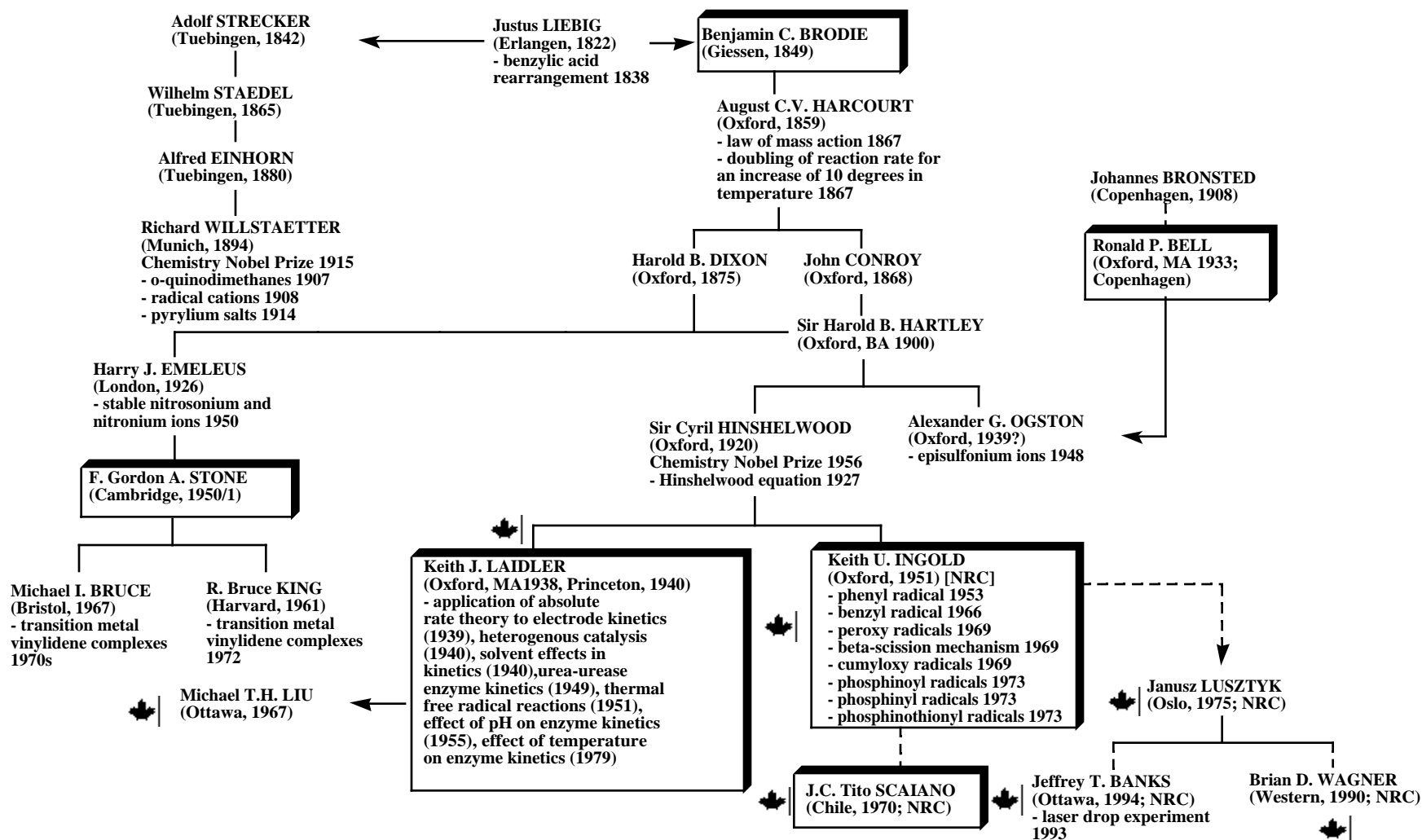


Fig. S27. Scientific genealogy tree #6 for Justus Liebig.

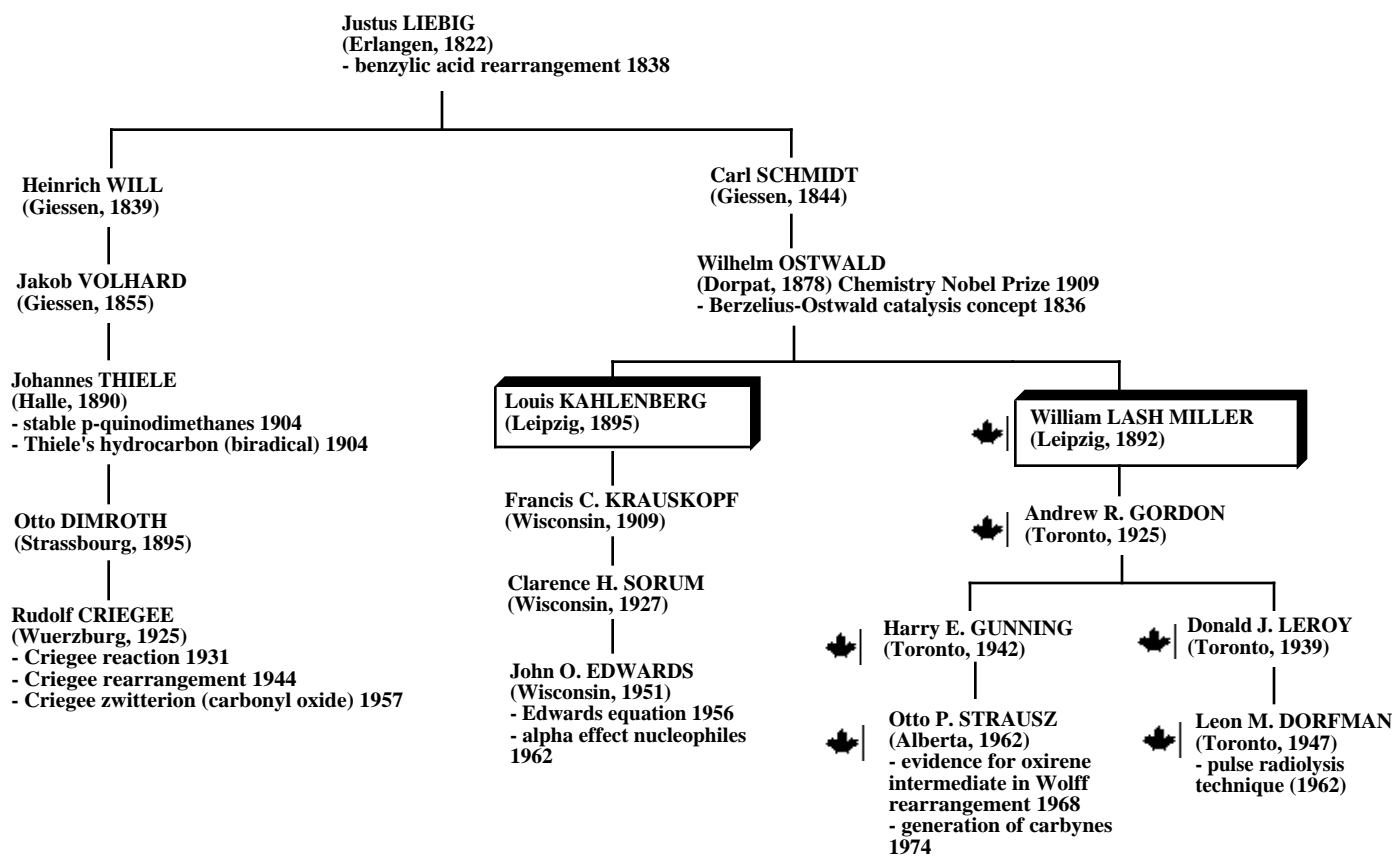


Fig. S28. Scientific genealogy tree #6 for Justus Liebig.

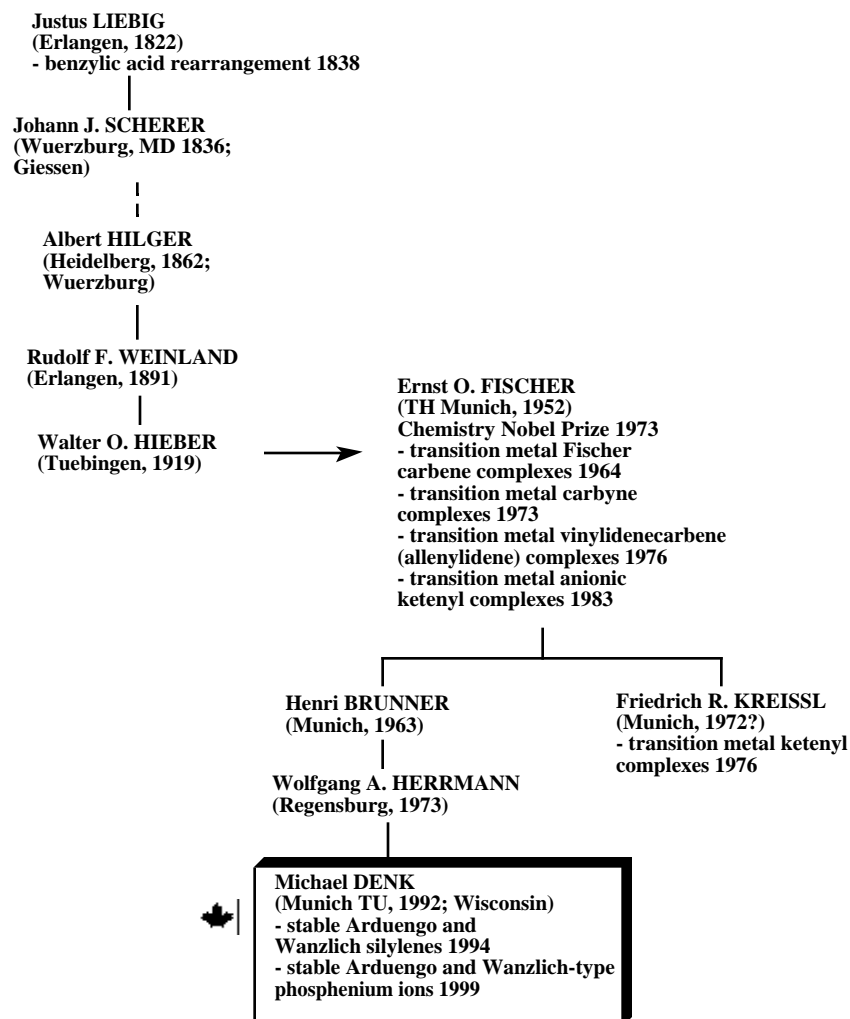


Fig. S29. Scientific genealogy tree #7 for Justus Liebig.

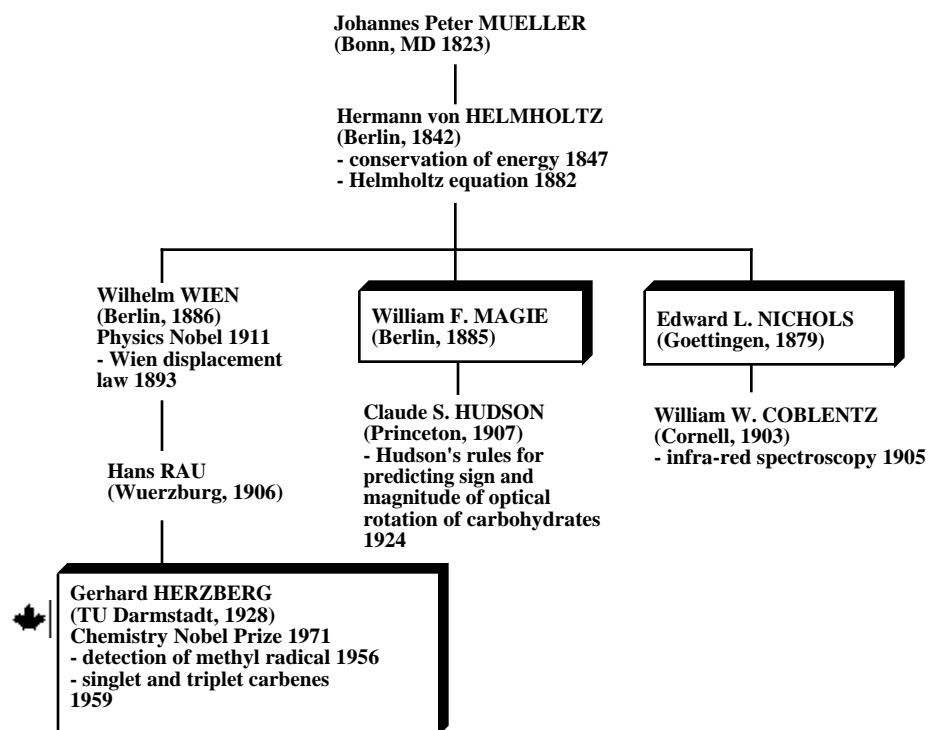


Fig. 30. Scientific genealogy tree for Johannes Peter Müller.

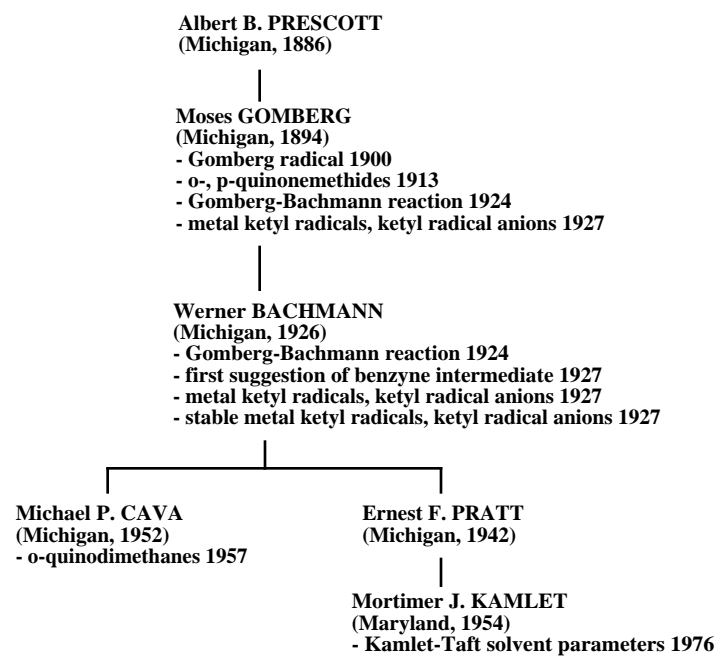


Fig. S31. Scientific genealogy tree for Albert Prescott.

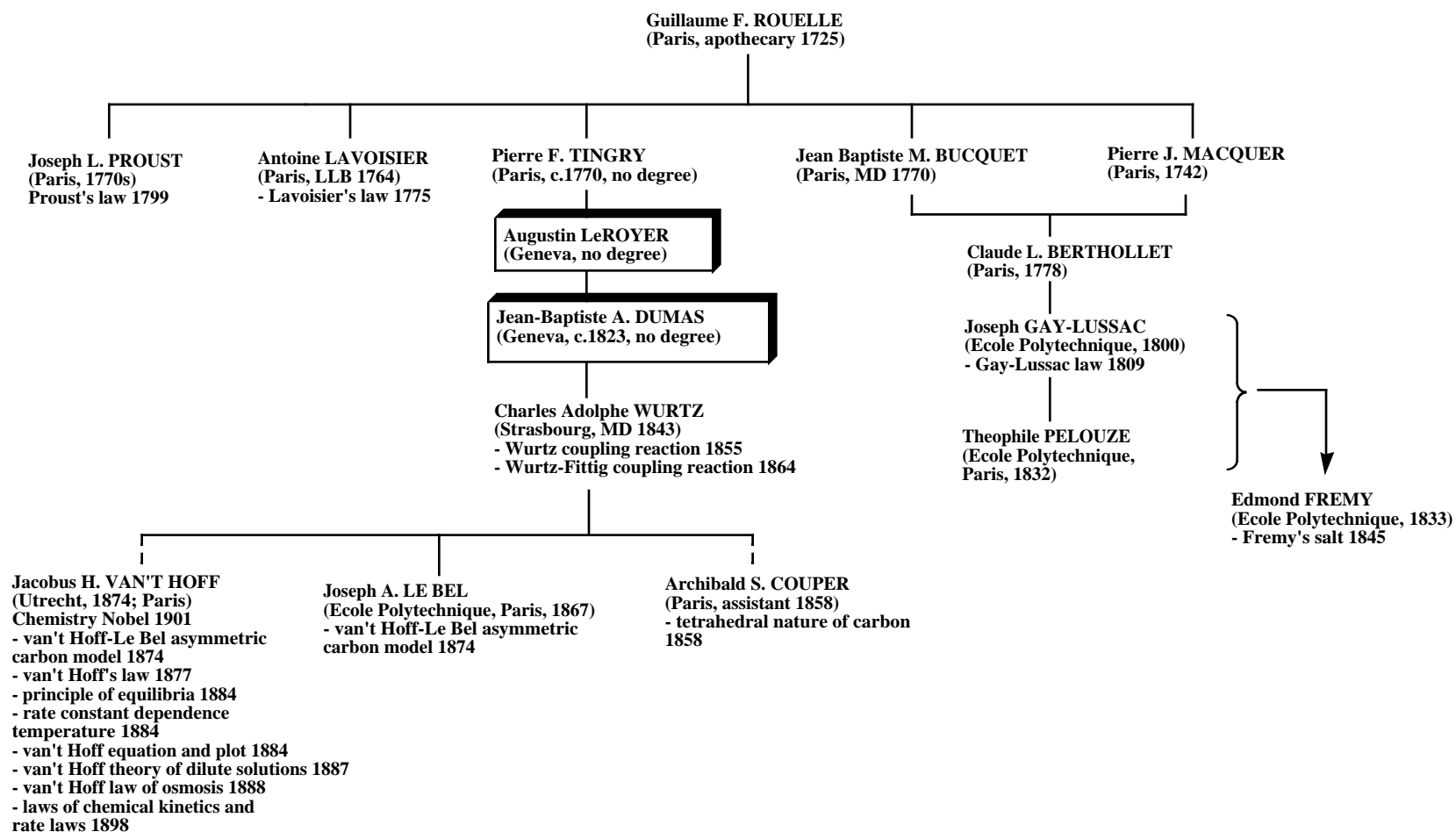


Fig. S32. Scientific genealogy tree for Guillaume F. Rouelle.

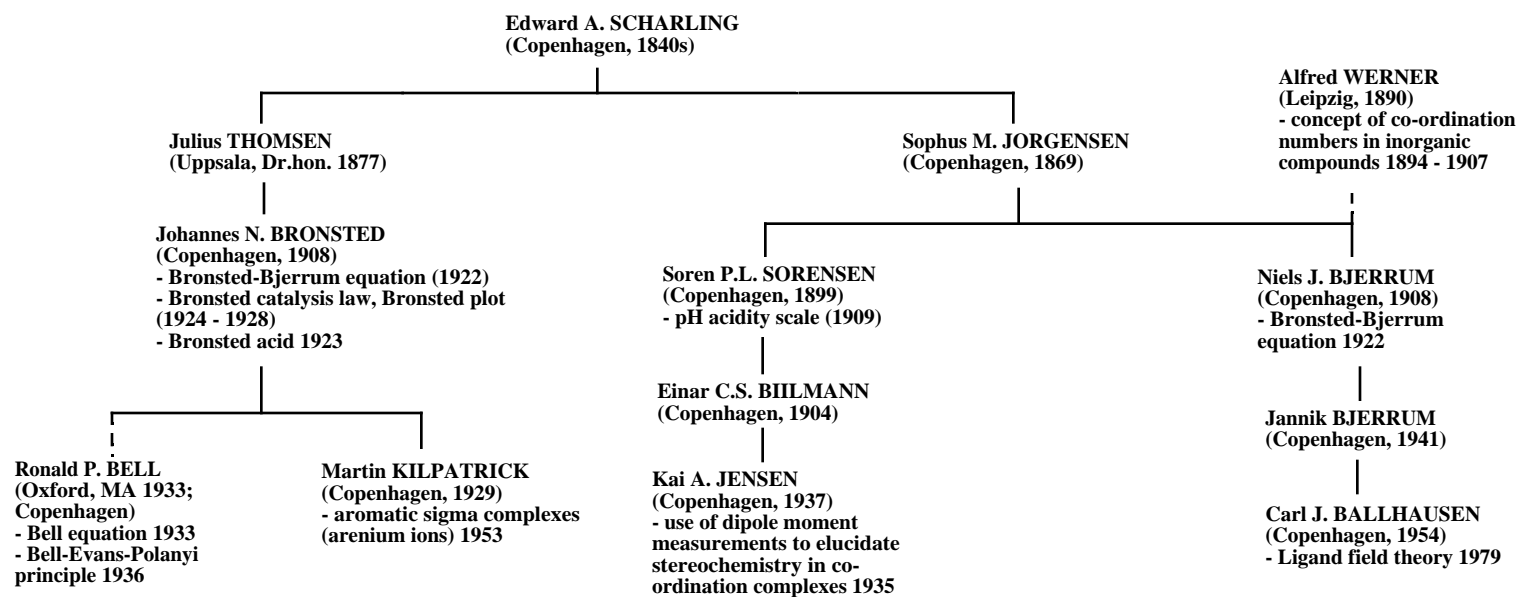


Fig. S33. Scientific genealogy tree for Edward A. Scharling.

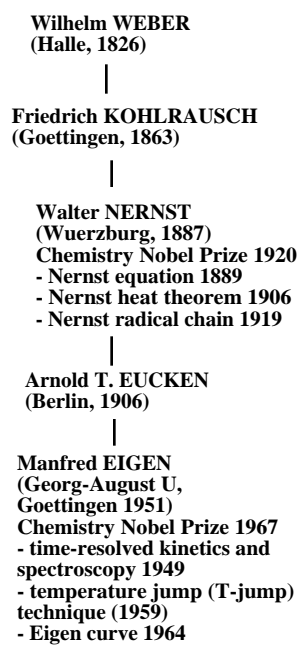


Fig. S34. Scientific genealogy tree for Wilhelm Weber.

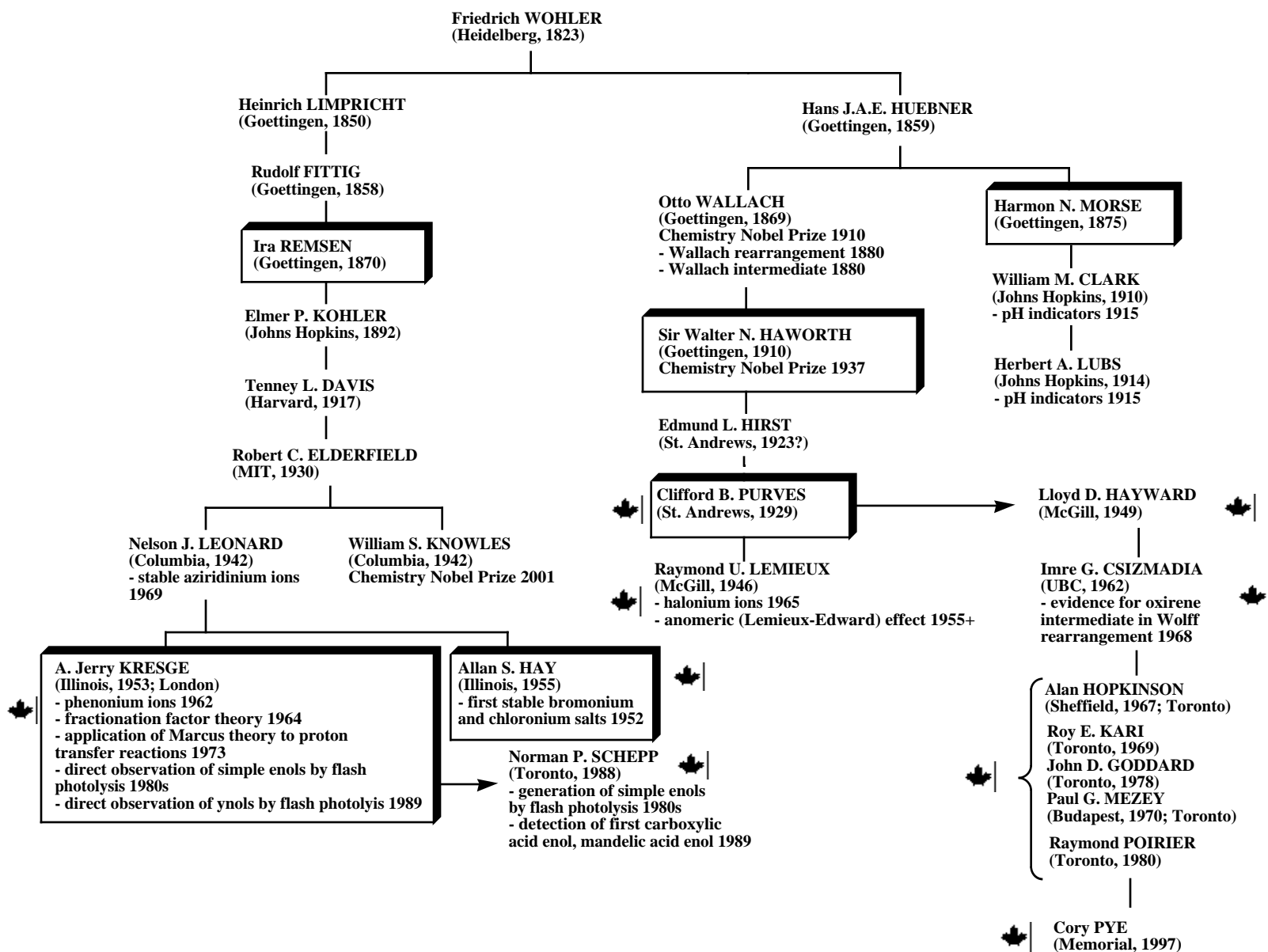


Fig. S35. Scientific genealogy tree #1 for Friedrich Wöhler.

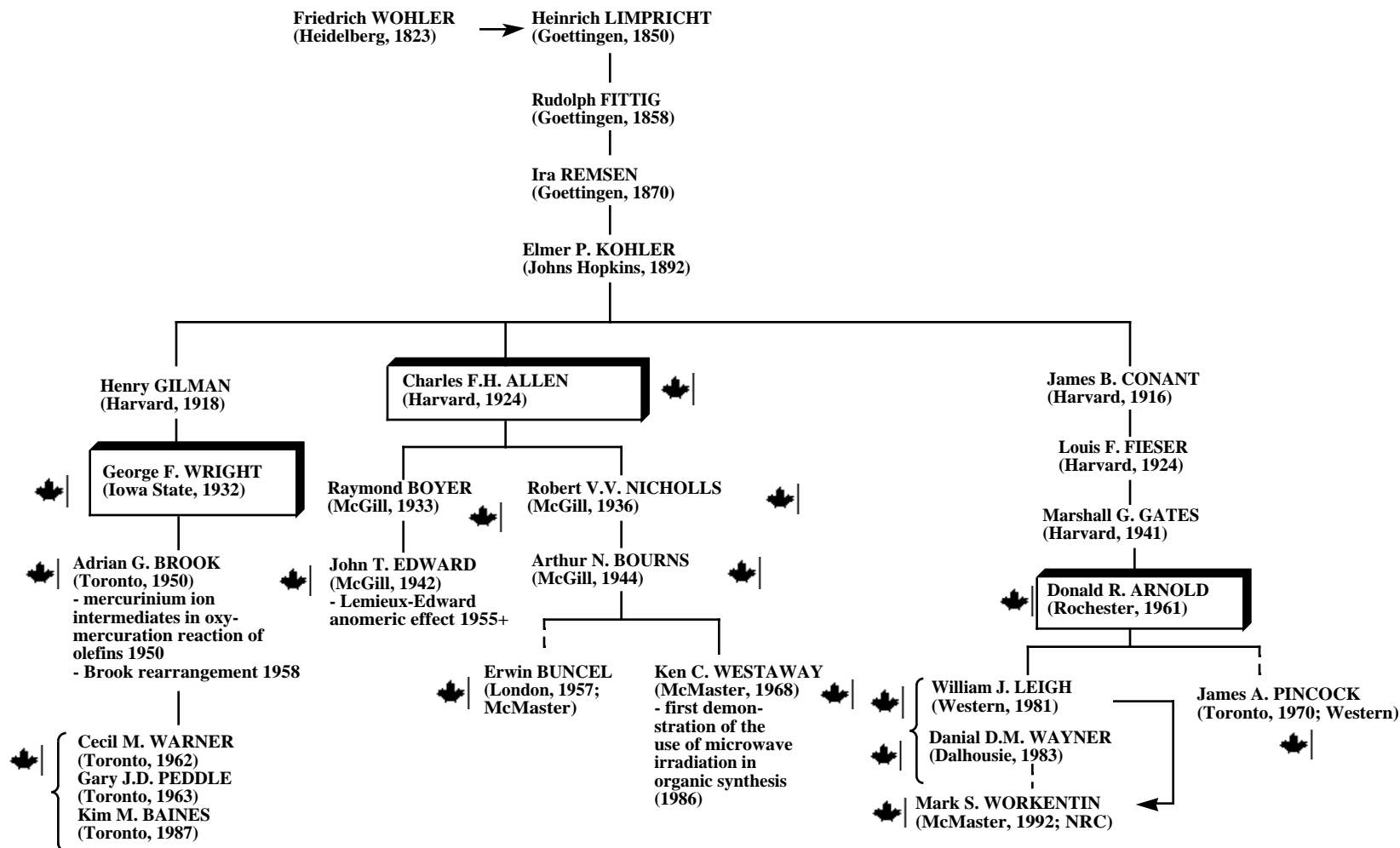


Fig. S36. Scientific genealogy tree #2 for Friedrich Wöhler.

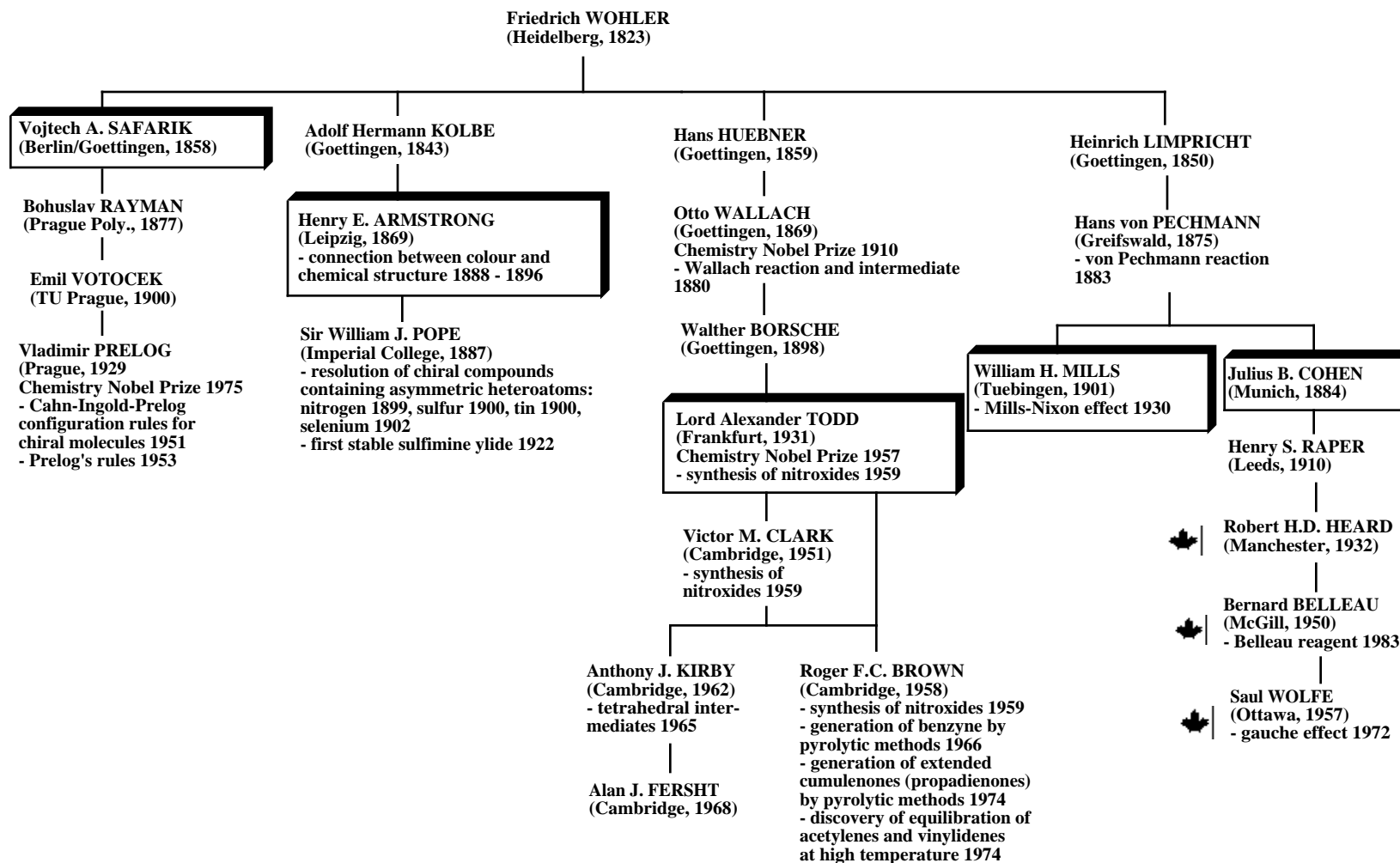


Fig. S37. Scientific genealogy tree #3 for Friedrich Wöhler.